

GULF COAST ASSOCIATION OF GEOLOGICAL SOCIETIES

TRANSACTIONS OF THE
40th ANNUAL MEETING



GCAGS
&
GCS-SEPM



*compliments of
architect
Nehls*

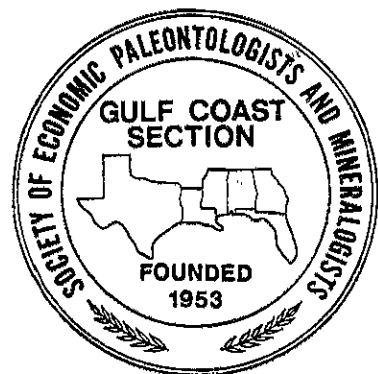
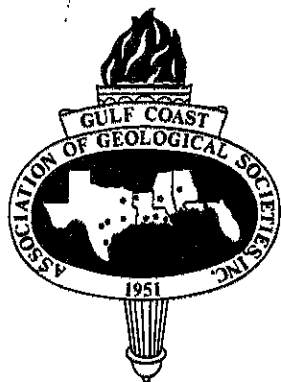
Lafayette, Louisiana

October 17-19, 1990

TRANSACTIONS

GULF COAST ASSOCIATION OF GEOLOGICAL SOCIETIES

A SECTION OF THE AMERICAN ASSOCIATION OF PETROLEUM GEOLOGISTS



VOLUME XL
1990

GARY KINSLAND
(GCAGS)

and

TONY CAGLE
(GCS/SEPM)

EDITORS

Prepared for

The Fortieth Annual Meeting of the
GULF COAST ASSOCIATION OF GEOLOGICAL SOCIETIES
AAPG REGIONAL MEETING

and

The Thirty Seventh Annual Meeting of the
GULF COAST SECTION OF THE
SOCIETY OF ECONOMIC PALEONTOLOGISTS AND
MINERALOGISTS

October 17 - 19, 1990

Published at Lafayette, Louisiana

*Copyright 1990 by the Gulf Coast Association of Geological Societies.
No reproduction without permission of the President of GCAGS.*

The Gulf Coast Association of Geological Societies acknowledges the generous support of the following Companies whose financial assistance made possible the printing of these *Transactions*.

ARCO Oil and Gas Company

Conoco, Inc.

Elf Aquitaine, Inc.

McMoRan Oil & Gas Company

Mobil Exploration & Producing U.S., Inc.

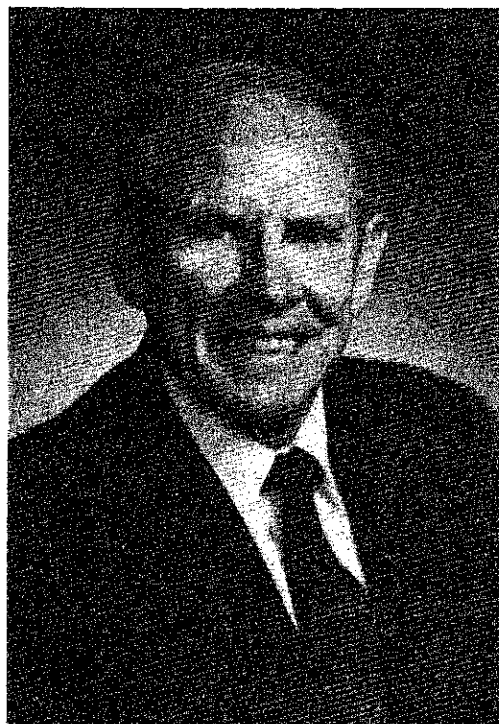
Phillips Petroleum Company

Texaco U.S.A.

DEDICATION

Transactions Volume XL

Frank W. Harrison



The Gulf Coast Association of Geological Societies is pleased to dedicate Volume XL of the *Transactions* to Frank W. Harrison, Jr., for leadership in the Association and other geological organizations and in recognition of his many outstanding contributions to Gulf Coast Geology, his profession and community.

Frank Harrison has unselfishly given fully of his time and talent in so many ways and areas that it is beyond the scope of this presentation to enumerate them. In addition to a successful career as a petroleum geologist, he has continually found time to participate in professional societies, civic organizations, his church; or an offer to help or advise a needy friend or colleague. In these pursuits he has gained the utmost respect for his ability both as a leader and

a concerned citizen; concern for the geological profession, the petroleum industry and concern for his community and family.

Frank was born on October 24, 1928, in Bastrop, Louisiana, where his father was employed by United Gas Production Co. as an area production and pipeline maintenance supervisor. After completing his primary and secondary education in Bastrop, his family ties to the petroleum industry influenced Frank to enter Louisiana State University to study geology. Frank's accomplishments at LSU included being a Cadet Colonel in the ROTC and student president of the college of Arts and Sciences. His academic achievements were recognized by honorary fraternity membership. Prior to receiving his B.S. degree in petroleum geology, Frank met Patricia McCoy, a campus beauty and

an accomplished music major from Jackson, Mississippi, who sang her way into Frank's heart. Following graduation in 1950, Frank joined the Union Producing Company in Jackson, Mississippi, and married Pat in 1951. Soon after this event Frank's professional life was interrupted by military service in Korea where he served as a field artillery officer in command of a front line battery and as a staff officer.

Upon returning from the military, Frank was assigned to New Orleans where for the next three years he gained valuable experience as an oil scout, well sitting and conducting subsurface studies along the Miocene trend of coastal Louisiana. The last two years were spent with Seaboard Oil Company. In 1956 Frank moved to Lafayette, Louisiana, as district geologist for TransTex Drilling Company, a subsidiary of

Husky Oil Company. Following this employment he served as head geologist for American Natural Gas Production Company.

In 1959 Frank became an independent and consultant in Lafayette and entered into a partnership with Jack Martin which prospered in the search for oil and gas in South Louisiana. In 1980 Frank formed South Louisiana Ventures, an exploration company staffed to originate prospects and to conduct leasing and drilling operations.

During Frank's tenure as an independent geologist, his exploration efforts have been very successful in finding resources through new field discoveries and extensions. One of Frank's unique attributes is his ability to pursue, with equal energy and client integrity, both consulting work and a program directed at finding oil and gas. His consulting activities have always been an important and satisfying part of his professional life. This is particularly applicable to his continued involvement as a unitization expert. Although he has limited his practice, he continues to appear before the State Conservation Commissioner as an expert witness and has gained recognition in this field as one of the select few geologists automatically sought after when regulatory unitization is necessary. Frank's client list includes a number of the larger independents and major oil companies operating in Louisiana.

Throughout Frank's career as a practicing geologist he has almost continuously been involved with professional societies and worthwhile organizations for whom he has assumed various positions of leadership. The culmination of these honors was his election to the presidency of the American Association of Petroleum Geologists for the term

1981-1982. Other professional organizations where he has served as president are the Lafayette Geological Society, the Gulf Coast Association of Geological Societies, the American Geological Institute and the Louisiana Association of Independent Producers and Royalty Owners Association. He is also a recipient of the AAPG's coveted Honorary Member award.

He is certified as a professional geologist by the AAPG's Division of Professional Affairs and is a member of the American Institute of Professional Geologists, the Society of Independent Professional Earth Scientists and the Geological Society of America.

Through the years Frank has given equal time to the technical side of his profession by writing and presenting some 15 papers to a number of societies and geological groups nationwide. Of particular interest to South Louisiana geologists was *The Cameron and Cibi-cides Hazzardi Stratigraphic Interval*. Frank was chairman of the group which prepared this sub-regional paper which received the best paper award at the 1962 GCAGS convention in New Orleans. Frank has given five timely papers on the Tuscaloosa trend having maintained a personal involvement in Tuscaloosa exploration and production since Chevron's discovery at False River in 1978.

Frank's non-geological accomplishments are equally impressive and set an example that would be most difficult for any individual to attain. He has appeared as an oil industry spokesman on a number of local television programs as well as having participated in informative visits over the years to legislators and officials in Washington. As a civic minded citizen, he has chaired the Lafayette United Givers Fund, served two terms of three years each on the

Lafayette Chamber of Commerce Board of Directors, and has been the recipient of a city-wide outstanding citizen award. In the private sector, he is presently on the board of directors of a bank, a public utility, an insurance company and is on the Board of Trustees for the Lafayette General Medical Center.

In addition to serving for fifteen years on the advisory board of the Salvation Army, Frank has been very active in the Methodist Church having served in all positions of responsibility available to laymen. His outstanding achievement, however, is teaching his Sunday school class continuously for the past thirty years. A faithful alumni, Frank is a charter member of the Geology Advisory Council and a member of the Louisiana State University Foundation.

Pat and Frank have two children, Patti Ann and Frank W. (Billy) Harrison, III. Both followed the family heritage by graduating from Louisiana State University. Billy is now working as an independent petroleum geologist in Houston, Texas. Frank, to this day, continues to dedicate his time and effort to the various pursuits which add up to a career that can best be described as outstanding. Having served as general chairman of the 1974 annual meeting of the Gulf Coast Association of Geological Societies held in Lafayette, he has earned the right to sit back, look wise and enjoy this fortieth meeting of the Association.

It is with distinct pleasure that the membership of the Gulf Coast Association of Geological Societies dedicates this Volume XL of the *Transactions* to Frank W. Harrison, Jr.

Jack P. Martin

TABLE OF CONTENTS

Dedication		Best Paper Awards and A.I. Levorsen	
<i>Frank W. Harrison</i>	iii	Memorial Award GCAGS	xxii
Report of the President, GCAGS	x	Best Poster Awards GCAGS	xxiv
Report of the President, GCS/SEPM	xi	Best Paper Awards GCS/SEPM	xxvi
Report of the General Chairman	xii	Excellence of Presentation Award GCS/SEPM . . .	xxvi
Report of the Editors, GCAGS, GCS/SEPM	xiii	Honorary Members GCAGS	xxvii
Report of the Program Chairmen	xiv	Distinguished Service Awards GCAGS	xxvii
1990 GCAGS Financial Aid to Students	xiv	Honorary Members GCS/SEPM	xxviii
Distinguished Service Award GCAGS		Distinguished Honorary Members GCS/SEPM .	xxviii
<i>Charles J. Corona</i>	xv	Distinguished Service Awards GCS/SEPM .	xxviii
Distinguished Service Award GCAGS		Recipients Best Paper Awards	
<i>Robert W. Sabaté</i>	xvi	and A.I. Levorsen Memorial Awards GCAGS	xxix
Honary Membership GCAGS		Best Paper Awards GCS/SEPM	xxxi
<i>Robert E. Boyer</i>	xvii	Officers and Committees—1990 Convention . .	xxxiii
Honary Membership GCAGS		Officers and Committees—GCAGS	xxxiv
<i>James A. Hartman</i>	xviii	Standing Committees—GCAGS	xxxiv
Honary Membership		Executive Committee—GCS/SEPM	xxxv
<i>Thomas H. Philpott</i>	xix	Officers of Member Societies	xxxvi
Honorary Membership GCS/SEPM		Past Officers and Convention Chairmen GCAGS	xxxvii
<i>Charles Clarence Albers</i>	xx	Past Officers GCS/SEPM	xxxiii
Honary Membership GCS/SEPM			
<i>Benjamin J. Petrusek</i>	xxi		

Technical Papers

Geochemical Indicators of Subsidence in Sediment Terrebonne Coastal Plain, Louisiana, Alan M. Bailey and Harry H. Roberts	1
Petrographic Image Analysis as a Tool to Improve Reservoir Data, F.M. Ballentine, D.J. Malek, and C.A. Philipson	3
Developmental Sequence, Necessity of High Deliverability and Volumetrics South Lake Arthur Field, Michael A. Barnes	5
South Lake Arthur Field Analysis of a Frio Unstable Shelf Delta Sequence, Joseph M. Battle, Jr.	21
Shoreline Evolution from 1945 to 1988 at Grand Isle, Louisiana, Celeste A. Bencaz and Richard U. Birdseye	31
Facies and Reservoir Characterization of an Upper Smackover Interval, East Barnett Field, Conecuh County, Alabama, Gail R. Bergan and James H. Hearne	35
Calculating Sandstone-shale Ratios From Growth Normal Fault Dips on Seismic Profiles, R. E. Bischke and J. Suppe	39
Evidence for Unconformities in the Cenozoic of the Central and South Texas Continental Shelf from Regional Electric Log and Seismic Cross Sections, Taylor Blood, Alfred E. LaPointe, Clifton E. Cran, and Mark F. Stanczyk	51

Technical Papers (continued)

Spatial Variations in Subsurface Pore Fluid Properties in a Portion of Southeast Louisiana: Implications for Regional Fluid Flow and Solute Transport, R. Brent Bray and Jeffrey S. Hanor	53
Physical Models of Structural Patterns Above Salt Diapirs, Roger C. Brewer and Richard H. Groshong, Jr	65
Fault Recognition and South Pass Block 61 Field, Eric W. Hatleberg and David C. Brucker	67
A Comparison of Depth-Conversion Methods in the Gulf Of Mexico, Melvan D. Carter and Gary R. Hyatt	69
Maturation of Sediments Near Horizontal and Inclined Salt Sheets, K. Carter and I. Lerche	73
Computer Aided Mapping of the Hackberry Unconformity in Northeastern Calcasieu Parish, Louisiana, Thomas C. Chandler and Gary L. Kinsland	87
The Florida Lineament, Gary Christenson	99
Coastal Land Loss in Florida, Ralph R. Clark	117
Petroleum Geology of the Vicksburg Formation, Texas, Janet Coleman and William E. Galloway	119
Shapes and Sizes of Reservoir Sand Bodies—A Bird's Eye View of Modern Mississippi Delta, James M. Coleman and H. H. Roberts	131
Trimble Field, Smith County, Ms: 100 BCF of By-passed Pay at -70004, Philip L. Cook, Jr., Robert D. Schneeflock, John D. Bush and John C. Marble	135
Living on the Edge: Louisiana's Marsh, Estuary and Barrier Island Population, Donald W. Davis	147
Trace Fossils and Paleoenvironments of Lower and Middle Austin Chalk (Upper Cretaceous), North-Central Texas, William C. Dawson and Donald F. Reaser	161
The Geomorphology of the Chandeleur Island Wetlands, K. Debusschere, L. Handley, T. Michot, S. Penland, D. Reed, R. Seal, and K. Westphal	175
First and Last Occurrences of Quaternary Benthic Foraminifera in the Gulf of Mexico: Relation to Paleooceanography, Richard A. Denne and Barun K. Sen Gupta	177
Variation in Salt Dome Faulting, Coastal Salt Basin, Thomas G. Fails	181
Three Dimensional Geometries and Thickness of Reservoir Sand Bodies—Example Carboniferous of Kentucky, J.C. Fern	195
Recent Advances in Borehold Imaging Based on the Circumferential Borehold Imaging Log (CBIL), Walter H. Fertl	203
Formation Temperature and Formation Pressure Affect the Oil and Gas Distribution in Tertiary Gulf Coast Sediments, Walter H. Fertl and W. G. Leach	205
Well Logging and Completion Technology for Horizontal Wellbores, Walter H. Fertl and Sid B Nice	217
Criterion for Recognition of Bedding Structures Utilizing Imaging Devices, Tom Fett	227
Differential Compaction Influences on Structure in West Cameron Block 225 Field, William R. Finley	229
Environmental Sedimentology of the Pontchartrain Estuary, George C. Flowers and Wayne C. Isphording	237
Groundwater Sources and Flow Patterns Derived from Stable Isotopes and Elemental Chemistry of the Southeast Louisiana Freshwater Aquifers, Gerard Gonthier and Paul Aharon	251
Results of Multibeam Swath Surveying by NOAA in the Gulf of Mexico Exclusive Economic Zone, Paul J. Grim	265

Technical Papers (continued)

On the Room Problem in Current Hypotheses for the Origin of the Gulf Of Mexico, David J. Hall	267
Petrology of a Basement Core from the Champlin No. 1 International Paper Company Well Jackson County, Mississippi, Danny W. Harrelson and Stephen P. Jennings	279
A Subsurface Study of the Denkman Sandstone Member, Norphlet Formation, Hatters Pond Field, Mobile County, Alabama, R. Scott Higginbotham, Leonard M. Young, Elvon G. Anderson, and Lawrence R. Baria	281
Estimating Organic Maturity from Well Logs, Upper Cretaceous Austin Chalk, Texas Gulf Coast, Gregory S. Hinds and Robert R. Berg	295
Land Subsidence Caused by Withdrawal of Oil and Gas in the Gulf Coastal Plain—The Houston, Texas, Case History, Thomas L. Holzer	301
Transgressive Valley Fill Sequences: Implications to Sequence Stratigraphy and Petroleum Exploration, John C. Horne, Paul E. Devine, David M. Wheeler and Alan J. Scott	303
Geology and Production Characteristics of the Seventy-Six, West, Field, Duval County, Texas, D. B. Hyatt	305
Parameters Controlling Hydrocarbon Distribution at Tatum's Camp Field, Lamar County, Mississippi, Phillip R. Jackson	319
RESERVOIR Heterogeneity in Middle Frio Fluvial Sandstones: Case Studies in Seeligson Field, Jim Wells County, Texas, Lee A. Jirik	335
Preliminary Test Results and Geology of the DOE/Superior Hulin #1 Geopressured-Geothermal Well, Vermilion Parish, Louisiana, Chacko J. John, Donald A. Stevenson, and Charles G. Groat	353
Simulation Modeling of Stratigraphic Sequences Along the Louisiana Offshore, Christopher G. St. C. Kendall and Allen Lowrie ..	355
Reservoir Heterogeneity In The Middle Frio Formation: Case Studies In Stratton And Agua Dulce Fields, Nueces County, Texas, Dennis R. Kerr	363
Fluvial Architecture and Reservoir Compartmentalization in the Oligocene Middle Frio Formation, South Texas, Dennis R. Kerr and Lee A. Jirik	373
Facies Stratigraphy and Relative Sea-level History—Upper Cretaceous Eutaw Formation, Central And Eastern Alabama, David T. King, Jr.	381
Genesis of Upper Cretaceous Marl-limestone Bedding, Alabama, David T. King, Jr.	389
Heterostegina Zone—A Shallow Anahuac (Late Oligocene—Early Miocene) Oil Frontier in Southern Louisiana and Mississippi, Paul R. Krutak and Philip Beron, Jr.	397
Regional Diagenetic Variation in Norphlet Sandstone: Implications for Reservoir Quality and the Origin of Porosity, Ralph L. Kugler and Alice McHugh	411
Anomalous Features in the Five Islands Salt Stocks, Louisiana, Donald H. Kupfer	425
Sedimentary Facies and Petrophysical Characteristics of Cores from the Lower Vicksburg Gas Reservoirs, McAllen Ranch Field, Hidalgo County, Texas, R. P. Langford, J. D. Grigsby, W. E. Howard, J. D. Hall, and J. Maguregui	439
Diagenesis and Cement Fabric of Gas Reservoirs in the Oligocene Vicksburg Formation, McAllen Ranch Field, Hidalgo County, Texas, R. P. Langford and F. L. Lynch	451
The Lasalle Arch and Its Effects on Lower Paleogene Genetic Sequence Stratigraphy, Nebo-hemphill Field, Lasalle Parish, Louisiana, Paul N. Lawless and George F. Hart	459
U.S. Gulf Coast Field Experience with Thin-bed Well Log Analysis, Tony D. Lawrence, Ashok K. Sinha and Walter H. Fertl	475

Technical Papers (continued)

Occurrence of Oil in the Austin Chalk at Van Field, Van Zandt County, Texas—A Unique Geologic Setting, James T. Lowe and Deborah B. Carington	485
Regional Tectonic and Hydrocarbon-Trap Modeling Along the Louisiana Offshore, Allen Lowrie, Neil M. Sullivan, Karen S. Hoffman	497
Natural Gas Plays in Jurassic Reservoirs of Southwestern Alabama and the Florida Panhandle Area, Ernest A. Mancini, Robert M. Mink, Berry H. Tew, and Bennett L. Bearden	515
Jurassic Sequence Stratigraphy In The Mississippi Interior Salt Basin Of Alabama, Ernest A. Mancini, Berry H. Tew, and Robert M. Mink	523
The Late Early Miocene Sabine River, Earl Manning	533
Depositional Environments of the Wilcox Group, Texas Gulf Coast: Stratigraphic and Early Diagenetic Signatures, J. A. May and S. A. Stonecipher	551
Facies Architecture of the Bayou Grand Caillou Area: An Abandoned Shallow Water Delta of the Mississippi River Delta Plain, Randolph A. McBride, Shea Penland, and John T. Mestayer	575
McPac Field (Matagorda Island Block 487-I) New Gas Reserves In A Mature Area, James D. McCullough Jr.	585
A Unique Austin Chalk Reservoir Van Field, Van Zandt County, Texas, B. Keith McKeel and Gregory R. Miller	597
Shoreline Erosion and Wetland Loss in Mississippi, Klaus J. Meyer-Arendt and Conrad A. Gazzier	599
Depositional Environment and Reservoir Properties of the Lower Tuscaloosa "B" Sandstone Baywood Field, St. Helena Parish, Louisiana, Randall S. Miller and Jack L. Groth	601
New Oil Exploration Play in Florida: the Upper Fredericksburg Dollar Bay Formation, Hugh J. Mitchell-Tapping	607
Incrusting and Boring Bryozoans from the Dessau (Chalk) Formation, Upper Cretaceous, Little Walnut Creek, Austin, Travis County, Texas, Penny A. Morris	623
Coastal Land Loss in Texas—An Overview, Robert A. Morton and Jeffrey G. Paine	625
Synergism of Riverine and Winter Storm-related Sediment Transport Processes in Louisiana's Coastal Wetlands, Joann Mossa and Harry H. Roberts	635
Sequence-stratigraphy of Plio-pleistocene Depositional Facies in the Offshore Louisiana South Additions, Jory A. Pacht, Bruce E. Bowen, John H. Beard, and Bernard L. Shaffer	643
Use of Organic Petrology and Graphic Correlation of Biostratigraphic Data in Sequence Stratigraphic Interpretations: Example from the Eocene-oligocene Boundary Section, St. Stephens Quarry, Alabama, Mark A. Pasley and Joseph E. Hazel	661
Coastal Land Loss in Louisiana, S. Penland, H.H. Roberts, S.J. Williams, A.H. Sallenger, Jr., Donald R. Cahoon, Donald W. Davis, and C.G. Groat	685
Paleoenvironmental Analysis of the Lower Oligocene Mint Spring and Marianna Formations Across Mississippi and Southwestern Alabama, W. Cecil Pettway and Dean A. Dunn	701
The Maurice Field: New Gas Reserves from Buried Structure Along the Oligocene Trend of Southwestern Louisiana, Michael P. Prescott	711
Offshore Sand Resources for Coastal Erosion Control in Louisiana, Shea Penland, John R. Suter, Karen E. Ramsey, Randolph A. McBride, S. Jeffress Williams, and C.G. Groat	721
Assessing the "Sedimentation Deficit" Problem in Louisiana's Coastal Salt Marshes, Denise J. Reed and Donald R. Cahoon	733
Direct Observations of a Large Active Mud Vent on the Louisiana Continental Slope, Harry H. Roberts and Thomas W. Neurauter	735

Technical Papers (continued)

Biostratigraphic Application to Pliocene-miocene Sequence Stratigraphy of the Western and Central Gulf of Mexico and Its Integration to Lithostratigraphy, R. N. Rosen and W. A. Hill	737
Barrier Island Evolution and Reworking by Inlet Migration Along the Mississippi-Alabama Gulf Coast, James B. Rucker and Jesse O. Snowden	745
Model for Unstable Shelf Deltas—A Sequence Conducive to Accumulation of Giant Gas Fields; Example from South Lake Arthur Field, Ram S. Saxena	755
Model For Reworked Deltaic Sands—Example From South Lake Arthur, Bayou Gentily and Bayou Leary Field, Ram S. Saxena	757
The Nature And Significance Of Condensed Sections In Gulf Coast Late Neogene Sequence Stratigraphy, Bernard L. Shaffer ...	767
Submarine Fan "Lobe" Models: Implications for Reservoir Properties, G. Shanmugam and R.J. Moiola	777
Regimes Contributory to Progressive Loss of Alabama Coastal Shoreline and Wetlands, Everett Smith	793
The Camerina "A"—Miogypsinoides "A" Depositional Patterns for Southwest Louisiana, Norman E. Smith	797
The Lake Arthur Complex Jefferson Davis and Vermilion Parishes, Louisiana: How it Fits Into the Regional Depositional Framework of the Camerina "A"—Miogypsinoides "A" Interval, Norman E. Smith	807
Clay Mineral Composition And Distribution In The Atchafalaya Basin And Terrebone Marsh Areas, South-central Louisiana, Kyle D. Stewart and David M. Patrick	809
Lower Cretaceous (Neocomian Age) Calvin Limestone Shelf-Margin Complex, Natchitoches Parish, Louisiana, P.A. Sullivan and R.G. Loucks	817
Origin of Barrier Islands on Sandy Coasts, William F. Tanner	819
A Three-dimensional Correction Factor Equation for Deviated Wells, Daniel J. Tearpock and Harvey Pousson	825
Abatement of Wetland Loss Through Diversions of Mississippi River Water Using Siphons, Johannes L. van Beek, David W. Roberts, Stephen Fournet	837
Evolution of Pre-Jurassic Basement Beneath Northern Gulf of Mexico Coastal Plain, DeWitt C. Van Sicken	839
Environment of Deposition of Downdip Lower Wilcox Sandstones, Provident City Field, Lavaca County, Texas, Steven W. Vest	851
Controls On Fracture Distribution in the Giddings Austin Chalk, Duane T. Wagner	859
Production Data as an Indicator of Gas Reservoir Compartmentalization in the Vicksburg S Sandstones (Oligocene), McAllen Ranch Field, Hidalgo County, Texas, E.G. Wermund and R.P. Langford	861
Spherulitic Pedogenic Carbonate Nodules From The Lower Tuscaloosa: A Tool To Be Used in Paleogeochemical Exploration For Hydrocarbons?, Lester Williams and Brian E. Lock	863

Appendices

Bylaws GCAGS Appendix A	865
Bylaws GCS/SEPM Appendix B	867
Publications GCAGS Appendix C	xxxix
Publications GCS/SEPM Appendix D	xli

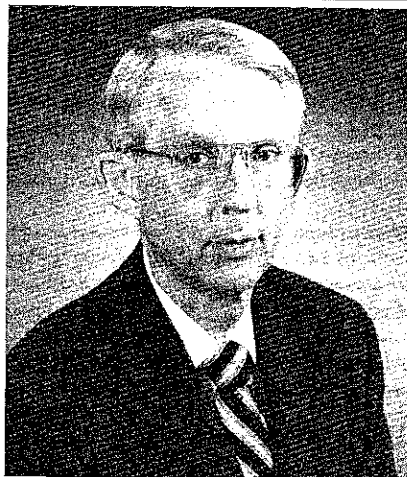
REPORT OF THE PRESIDENT

Gulf Coast Association of Geological Societies

Peter G. Gray, President

A decade has passed since the GCAGS last held its annual convention in Lafayette. The 80's forever altered our profession and as we confront the final ten years of this century, we geologists are faced with challenges and opportunities that were hardly contemplated when we last convened along the banks of the Bayou Vermilion in 1980. We welcome all of you to Lafayette and hope that you will be delighted with our accommodations, food and entertainment and above all, that you will find the technical program interesting and intellectually stimulating. Certainly General Chairman Brian Lock and his entire convention organization have made every effort to assure that this 40th annual convention will be an outstanding success.

With a net worth in excess of \$500,000, the GCAGS remains on solid financial ground. Our funds are ably managed by Gerald Cooley and his committee, who work closely with the Board of Directors. Again this year, our major non-convention expense was the Financial Aid to Students program which awarded \$24,816.00 to twenty-five students from a number of Gulf Coast area colleges and universities. This sum represents a 33% increase over the amount awarded in 1989 and is in response to a renewed interest in the grant program. The committee has been chaired for the past three years by Richard Boebel who carried out his duties conscientiously and with much enthusiasm. Dick has now passed the job on to Valerie Ewing, who is with Chevron in New Orleans. In addition, at the mid-year meeting



this past April, the Board approved a contribution of up to \$15,000.00 to help the GCS/SEPM defray the cost of publishing a volume on the geochemistry of Gulf Coast oils and gases.

I am grateful to Gerald Cooley and Dick Boebel and to all of the other Standing Committee Chairmen, namely Stewart Chuber, Awards and Nominations; David Pope, Historical; Edward Roy, Long Range Planning; Robert Boyer, Publications; and Robert Sabaté, AAPG Advisory Board Representative, for their hard work and support. Through their leadership and experience, these gentlemen provide the continuity that is so necessary to keep the GCAGS functioning as it should. I am also very appreciative of the help and guidance I have received from my fellow

officers on the Executive Committee: Howard Fielding, Secretary; Burton Smart, Treasurer and William Payne, Past-President. And I was fortunate to have the counsel of my old friend, Jim Hartman, who was president two years ago. Jim can always be depended on for some very candid and succinct advice.

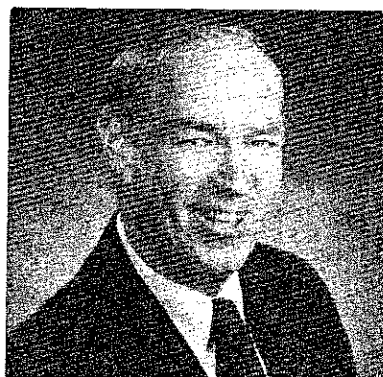
Of course, no organization can really function at its best without a good secretary. In Birdena Schroeder, our Executive Secretary, we have one of the best. Birdena has been invaluable in running the day-to-day affairs of our association and has provided me with much needed assistance on any number of occasions. On top of her routine secretarial duties, Birdena serves as Editor of the semi-annual GCAGS Newsletter, the initial issue of which was published in April of this year. In order for the newsletter to receive the widest distribution among our members, a copy is mailed to all of the member societies for inclusion in their bulletins.

We hope that the 1990 convention in Lafayette will be up to the high standards set by the previous thirty-nine. Our local group, headed by Dr. Brian Lock, and with the able assistance of Bruce Lemmon and Nancy Means of the AAPG Convention Department, has been working very hard for several years to assure that our meeting will be a memorable one. They have my eternal gratitude for a job well done.

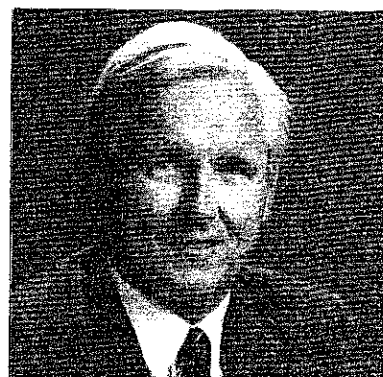
Again, welcome to Lafayette. Lean back, relax and let the good times roll!



VICE PRESIDENT
Clyde Harrison



SECRETARY
Howard Fielding



TREASURER
Burt Smart

REPORT OF THE PRESIDENT

Gulf Coast Section

Society of Economic Paleontologists and Mineralogists

Sheila C. Barnette, President

The Gulf Coast Section of SEPM has a long and distinguished record of service to the Gulf Coast geologic community. Through conferences, field trips, publication and participation in the Annual Meetings of the GCAGS, our Society has made lasting contributions in the fields of stratigraphy and paleontology.

Once again, through the hard work of our convention committee chairmen, an excellent technical program has been assembled for the 40th Annual Meeting of the GCAGS/GCS-SEPM. I would like to express my sincere admiration and appreciation to these individuals who have contributed so much time and effort on behalf of the GCS-SEPM: Tom Shunick, Vice Chairman, William Schneider, Program Chairman, Tony Cagle, Editor, and Michael Nault, Judging and Awards Chairman. Many others assisted with "behind the scenes" tasks, and my thanks go to all who have made this meeting a success. The Section gratefully acknowledges the cooperative efforts of the GCAGS planning committees, and extend our particular thanks to General Chairman, Brian Lock.

The Tenth Annual GCS-SEPM Foundation Research Conference on Gulf of Mexico Salt Tectonics, held in Houston, was a great success. Thanks to a technical program of the highest quality, assembled by the Program Committee and coordinated by co-chairmen Dorene West and Allen Lowrie, the conference drew a record attendance of 420 participants.



This year the Section is pleased to present its Eleventh Annual Research Conference to be held December 2-5, 1990 at the Adams' Mark Hotel in Houston. John Armentrout and the Program Committee have planned a full two and one-half days of oral and poster presentations on "Sequence Stratigraphy as an Exploration Tool: Concepts and Practices in the Gulf Coast." A proceedings volume of extended abstracts will be available at the conference.

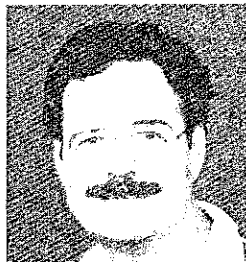
The GCS-SEPM Foundation Research Conferences are financially supported by the Foundation and coordinated by Foundation Executive Director, Bob Perkins,

and by the Trustees, William P.S. Ventress, Clarence Albers, and John L. Carney. Many thanks go to the individual and corporate contributors, whose financial support make these conferences and publications possible. In addition to monetary contributions, the Foundation would like to solicit ideas for future research conference subjects. We are committed to providing a forum for the presentation and discussion of topics of current interest to Gulf Coast geoscientists.

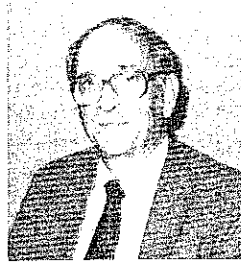
I would like to express my appreciation to BP Exploration for granting me the time to serve the GCS-SEPM during the years, and for their continuing support of the Society and the Foundation. I also wish to thank my fellow members of the Executive Council for their hard work and encouragement during this year: Denise Butler (President-elect), Nancy Engelhardt-Moore (Secretary), Michael Center (Treasurer), Michael Nault (Vice President), and Sam Miano (Past President). A word of special appreciation goes to Bob Perkins for his wise counsel on many issues throughout my year as President. To all those who offered their assistance and moral support, and to the membership of GCS-SEPM for allowing me the privilege of serving as President this year—my sincere thanks.



PRESIDENT-ELECT
Denise M. Butler



VICE PRESIDENT
Michael Nault



PAST PRESIDENT
Samuel P. Miano



SECRETARY
Nancy Engelhardt-Moore



TREASURER
Michael W. Center

REPORT OF THE GENERAL CHAIRMAN

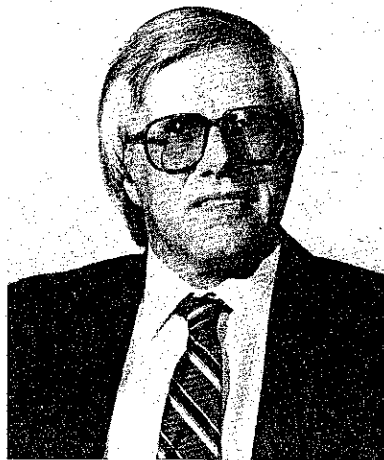
Fortieth Annual Meeting—1990

Brian E. Lock, General Chairman

On behalf of the Lafayette Geological Society and all those who have worked to put together this convention, I welcome you to Lafayette, "Bienvenue a Lafayette." "Laissez les bon temps rouler!"—Let the good times commence, as the French expression has it; a good time for all of you in Lafayette during the convention and "good times" once again for our industry.

Were I to open this report in the conventional way, I would explain how I got suckered into the job of Convention General Chairman, tell you how much work it has involved, and recommend that you not make the same mistake. Well, it has not been like that at all! For nearly three years, I have enjoyed being involved in the planning and preparation for this convention, working with and getting to know some outstanding people. On the one hand, Pete Gray, as President, has involved himself in every phase of the planning and has made my own workload enormously lighter. Pete is, in every sense, a very special person and I have enjoyed the privilege of working with him and getting to know him. Next year, Houston will have three people sharing the General Chairman's job; this is quite simply because there is only one Pete Gray and he lives in Lafayette, so the Houston General Chairmen will have to do all their own work!

The other reason that my job has been so easy lies with all the committee chairpersons and members. The Lafayette Geological Society is relatively small these days, but we have a tremendous wealth of enthusiastic members who have given up much of their time to help with the convention. Every time I go back and ask someone to take on yet another task, I expect to be told, "Look, I have a living to earn. Go find someone else this time!" This never happens! The response is always, "Sure, when do we need it done by?" I would like to thank by name all the fifty or more volunteers who have given so freely of their time and expertise; I regret not having enough space in this column, but urge all of you attending the convention or using the *Transactions* to look at the list of committees. Next time you see any of these people, tell them how much you appreciate their efforts—this is all the reward they could ask for. I think we have put together



a great convention, with outstanding technical and social programs and a *Transactions* volume of which we are proud; the committee members are directly responsible for this success and for your enjoyment of it.

Each year, the Annual Convention of the Gulf Coast Association of Geological Societies is hosted by a different member society. In some ways this is a problem; maintaining continuity is not easy and there is a tendency to re-invent the wheel each time. In other ways, however, the system leads to great strengths. Every aspect of the convention is looked at through fresh eyes, and each society brings an individual imprint, a distinctive character to the proceedings. This year is no different. We in Lafayette enjoy the benefits of a very special culture, the Acadian (Cajun) heritage. Some of my colleagues have had the advantages of having been born Cajun and grew up surrounded by the French language, the customs, the music and especially the food that Cajun culture implies. Some of us came here from distant states, even from other countries, but all of us in Lafayette realize that we have something special here, and look forward to sharing some of the unique atmosphere of Acadiana with you, our guests, over the next few days. Some of our field trips include unusual opportunities: to participate in a traditional *cochon du lait* by candlelight in an

ante-bellum plantation home, for example. Our Thursday night party will take place in Vermilionville, the newly opened and fascinating re-creation of historic early Lafayette, with the chance to sample some of the best dishes from a number of our outstanding local restaurants. We hope that some of you will stay on in Lafayette for a few days after the convention and enjoy some of the other attractions that the area has to offer.

We are very pleased with our technical program, too. Special sessions devoted to field studies, subsurface investigative techniques, depositional models, sequence stratigraphy and coastal wetland loss should provide talks of interest for everyone. The poster sessions have expanded considerably from last year, and many poster presenters have opted to accept our offer of *Transactions* space for a full paper; this is part of our effort to give greater credibility to the poster sessions, which we see as being a very valuable part of the program. Oral papers seldom really provide a forum for discussion with the audience, but the poster format returns us to an intimate and face-to-face presentation where an exchange of ideas can truly occur. To my mind, that is what a scientific convention is really supposed to involve.

We had an exceptionally large number of abstracts offered to us, and hope that they represent a significant improvement in the state of the oil patch's health. We are starting to see signs already of a shortage of young people entering the industry as professionals, and because of our concerns we have created a new committee to encourage student participation in the convention. We are offering exceptionally low registration fees; ten dollars gives a student admission to the technical sessions and exhibits, includes a copy of the *Transactions* (a \$30.00 value) and entrance to the Ice-Breaker buffet and cocktail party. Special subsidized functions open only to students include a Thursday night shrimp boil party at no cost and a short course presented by Rufus J. LeBlanc, Sr., at a nominal fee to cover part of the reproduction costs for the course notes. Rufus has refused to accept any honorarium for his time, and we thank him for his generosity.

I have already used up more than the space I have been allocated for the purposes of this report, so I will not describe in detail all the other aspects of our program, including the many field trips, short courses, the new Core Presentations, etc., but hope that they will meet your needs. I do, however, urge you to attend the opening session on Thursday morning. So many of us tend to think of the program as starting

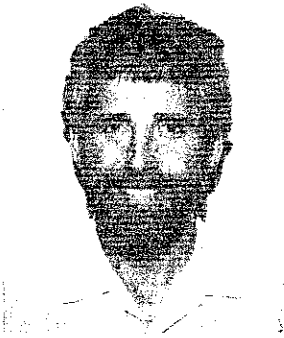
with the Ice-Breaker on Wednesday night, followed by a morning off and serious business commencing after lunch with the Technical Sessions (and we have some very interesting and practical papers on the agenda). The Thursday morning Opening Session is of great importance, however. It gives us a chance to join in honoring several very special friends, just by our presence. It also gives us a chance to listen to

talks by two outstanding gentlemen; Mr. Joe Fraser of Newfield Exploration, and that very distinguished Cajun, Rufus J. LeBlanc, Sr. Please come and join us on Thursday morning!

We all join in wishing you a pleasant and useful convention and an enjoyable stay in Lafayette.

REPORT OF THE EDITORS

1990 Transactions



Gary Kinsland
Editor, CGAGS

Upon rereading the comments of previous editors in my preparation for writing this, I noted that most have commented on the importance of the *GCAGS Transactions* to the dissemination of geological knowledge in the Gulf Coast. I was reminded of how I was impressed by both the level and diversity of science in the *Transactions* when I first moved to Lafayette thirteen years ago. For a geologist coming to this area the *Transactions* are the logical place to start to learn the geology. The papers and the references have traditionally served as the starting point for research on a broad range of Gulf Coast geological topics.

While browsing through past *Transactions*, I believe I have noticed a trend which disturbs me. I believe, though I have not checked by counting, that the *Transactions* are containing fewer and fewer cross-sections and subsurface maps. This indicates to me that fewer regional and field studies are being submitted. While I understand the need for and encourage the publication of laboratory, instrumental, technique, paleontological etc. studies and do not propose that we reduce the number of these, I think one of the great values of the *Transactions* has been communication of ideas of the buried relationships in the Gulf Coast. Without communication, each company or individual reinvents the wheel and names it whatever comes to mind. The "B" sand of one company is the "4.2" sand of another, one says it is Oligocene with little evidence while another has hard evidence that it is Miocene. Soon we cannot communicate because we are all talking different languages. It is through the *Transactions* that we communicate and define our language so that the science of understanding the subsurface can progress.

As we drill new areas, as we drill deeper, as we achieve denser well control, as we get better seismic, we will always be developing clearer pictures of the subsurface relationships. Let us get these pictures into the *Transactions* as fast as we can get data released so that the science can go forward. We will find more minerals too.

This year we made a definite effort to computerize the *Transactions*. In the past some papers had been submitted on diskettes . . . we requested diskettes but accepted some not on diskette. This is a step forward. It streamlines the publication resulting in significant savings in time, headaches and, most importantly, money. Stacy Buntrock of Hart Graphics has been very helpful in this changeover to computer printing and in all aspects of the editorial effort.

The names of the members of the editorial committee are listed somewhere under CGAGS committees. Please read this list so that the members get at least some measure of the recognition which they deserve. Special recognition is due to Jack Shirley for handling the politics and tedium of editing the "front work" (awards, officers etc.), to Mark Rutherford for computer assistance and to Ramona Viguerie, USL Geology Department secretary, for help and patience beyond description.



Tony Cagle
Editor, GCS-SEPM

In October of 1980, shortly after starting my career with Gulf Oil, I attended my first GCAGS convention here in Lafayette. At the time I had no idea how much these conventions would impact the development of my career. While attending them I have gained new insights into all phases of geology and made friends with fellow geologists that will last a lifetime.

I have enjoyed editing the 1990 SEPM section of the *Transactions*, a task which was made much easier than anticipated by the authors diligence in submitting excellent papers. The editorial staff of Jack Briegel, Mike Archer, Tom Hudson and Barry Gidman were of great assistance in reviewing papers and making valuable comments in the editing process.

We have an excellent series of papers submitted for the SEPM section, it is evident that our profession remains strong in the petroleum industry and in the growing concern of environmental management. I commend all the authors for their superb papers.

I wish to thank Hart Graphics for all their help in bringing this *Transactions* to press. The submittal of almost all of the papers on computer diskette and the quick service of the people at Hart made this *Transactions* a success.

Also, I would like to thank my employer Chevron, U.S.A. for gladly paying for the expense of my mailing and telephone calls in preparing the *Transaction*.

REPORT OF THE PROGRAM CHAIRMEN



Daniel J. Tearpock
GCAGS



William Schneider
GCS/SEPM

We are grateful to the many authors who submitted excellent papers for this convention. Considering the conventions in recent years, we had an unexpected submission of over 130 papers.

The program this year is directed toward the working earth scientist with sessions covering such topics as "Field Studies" and "Techniques". The program also presents topics of concern to all who live in the Gulf Coast area such as "Coastal Wetlands and Land Loss."

We have put together a very exciting short course program. Keeping in mind the working earth scientist, this year's program focuses on applied short courses. From quantitative mapping techniques, to new and exciting methods in extensional balancing; from formation evaluation of shaly sand to sequence stratigraphy.

1990 GCAGS FINANCIAL AID TO STUDENTS

In 1990 GCAGS received thirty-three requests for financial assistance from both graduate and (honors program) undergraduate geology students in fifteen Gulf Coast colleges and universities. Grants totalling \$24,816.00 were awarded to twenty-five successful applicants. Nineteen of these awards were for \$1,000.00 and the remaining six ranged from \$761.00 to \$1,337.00.

A committee chaired by Richard W. Boebel, New Orleans, consisting of Valerie M. Ewing, New Orleans, Peter G. Gray, Lafayette, and Willard P. Leutze, Lafayette, reviewed the proposals and recommended grants to the following students:

Kenneth B. Alexander	University of Texas—Austin	David C. Keith	University of Southern Mississippi
James G. Brewton	University of Texas—Austin	Ching-Weei Lin	Texas A & M University
Kathleen M. Browne	University of Miami	Joseph S. Lombardo	University of Southwestern Louisiana
Norma I. Castenada	Texas A & I	Mac McRae	Auburn University
Thomas C. Chandler	University of Southwestern Louisiana	James B. Mann	Northeast Louisiana University
Elizabeth W. Chinn	Louisiana State University	Lisa L. Minter	University of New Orleans
Gregg A. Crandall	Rice University	Vivek Navale	University of South Florida
Eric W. Cummins	University of Southwestern Louisiana	Terry M. Puckett	University of Alabama
Andrew J. Davidoff	Texas A & M University	Alan Sanders	University of Southwestern Louisiana
Walter M. Denny, III	University of Texas—Austin	Fernando P. Siringan	Rice University
Cathy Escott	University of Southwestern Louisiana	Elizabeth M. Sprehe	Millsaps College
John J. Genuise	University of Texas—Austin	James J. Willis	University of Southwestern Louisiana
Carla B. Keith	University of Southern Mississippi		

The above students have been urged to submit the results of their research to the GCAGS in manuscript form for review, possible oral presentation and inclusion in the *Transactions* for the GCAGS annual convention following the project completion.

CITATION FOR DISTINGUISHED SERVICE AWARD GULF COAST ASSOCIATION OF GEOLOGICAL SOCIETIES

Charles J. Corona

Charles J. Corona is the recipient of the 1990 Distinguished Service Award of the GCAGS. Corona was born in New Orleans, Louisiana, and was educated in the parochial school system there. He received his B.S. degree in Geology from Tulane University in 1964, and his M.S. degree also from Tulane in 1970.

Corona was employed by Gulf Oil Corporation from 1966 to 1973, by Davis Oil Company from 1973 to 1978, and as a consultant to Westover Oil Company from 1978 to 1981. He has worked as a self-employed consultant petroleum geologist from 1981 to the present.

Charles married the former Mary Gertrude Tucker and is the proud father of three lovely daughters. The Corona family is an extremely closely knit group of achievers, with wife "Trudy" contributing unselfishly to the New Orleans Geological Auxiliary, and the Corona girls showing excellence in competitive swimming.

Corona is recognized for his long-term service to GCAGS. He has served the New Orleans Geological



Society as its Treasurer, Vice-President, President-Elect, President, and subsequently as a Director. He has chaired numerous committees, including the Constitution and By-Laws Committee, which re-wrote the Constitution and established the By-Laws which govern the Society today. In 1986, Corona donated office space to NOGS, enabling the Society to establish its first permanent office. In recognition of his

numerous contributions to the Society, NOGS presented its Honorary Life Membership Award to Corona in 1989. Corona was Treasurer of GCAGS in 1978, and chaired the Employment Assistance Committee in 1988.

Charles is an active member of AAPG and a Certified Petroleum Geologist. He is presently a delegate to AAPG. Other professional affiliations include SIPES, LAIPRO and IPAA, where he has served as a director.

Charles Corona is a highly motivated, outspoken exploration geologist, who combines these traits with the warmth and sincerity of a dedicated family man.

This Distinguished Service Award is presented to Charles Corona in appreciation for his dedication and services, and for his sincere interest in his fellow geologists and in the geological organizations to which he belongs. It is an honor justly deserved.

—Carlo Christina

CITATION FOR DISTINGUISHED SERVICE AWARD

GULF COAST ASSOCIATION OF GEOLOGICAL SOCIETIES

Robert W. Sabaté

Bob Sabaté was born in Los Angeles, California and raised in New Orleans where he was educated in parochial schools. He earned his B.S. in Geology from Tulane University in 1952. He then served in the U.S. Navy for three years, was discharged as a Lieutenant, j.g., and entered Louisiana State University where he received his M.S. in Geology in 1957.

Bob began his career with Shell Oil Company where he spent 15 years, first in Baton Rouge and then New Orleans, working on various geological assignments in the Gulf Coast onshore and offshore.

During this period, Bob somehow found time to continue his schooling at night. He received a Certificate in General Commerce from Tulane in 1963, an M.B.A. from Loyola University of the South in 1967, and a J.D. from Loyola in 1972. In 1969, Bob married Judith Kennedy. He and Judy have two fine sons, Pierre and Etienne.

Bob left Shell in 1972 to join Koch Exploration Company and eventually became Vice President—Exploration, Gulf Coast. In 1986, he left Koch and practiced as an independent geologist until late 1987 when he became co-founder and President of the San'Doil Company. He is also co-founder and vice president of Lumitox Gulf, an environmental services company.



Since the late 60's, Bob has tirelessly contributed his many talents to geological professional organizations. He has served the New Orleans Geological Society as President, President-Elect, Vice President and Secretary. He has chaired numerous NOGS committees and has contributed papers to two NOGS publications. Bob also serves as NOG's resident lawyer. In 1989, he was awarded an Honorary Life Membership by NOGS.

Bob is ever active in the AAPG. He is serving his second term in the House of Delegates, is Chairman of the Constitution and Bylaws Committee, serves on the Advisory and

Nominations Committees, and formerly served on the Awards Committee. Bob is certified by the DPA and is Chairman of the joint SIPES-DPA Consulting Agreement Form Committee.

His GCAGS activities are many. He is currently AAPG Liaison Officer, was Secretary in 1987-88, Vice-Chairman of the 1988 Convention, has been Co-Chairman of the Levorsen Award Committee, Co-Chairman of the Tectonic Map Committee for which he received a GCAGS Outstanding Service Award, and has contributed to the *Transactions*.

Bob's professional affiliations include SIPES, GCS/SEPM, PLANO and the Louisiana State Bar Association. He is founder and Chairman of the Energy Council of New Orleans of which NOGS is a member.

As a geologist, lawyer and businessman, Bob's talents and interests are many and varied. I know him well, as he is a close friend of 50 years. What particularly sets him apart is his willingness to get involved. He is a man of conviction and truly a gentleman. He is always willing to help; always willing to serve. Bob is truly deserving of the Distinguished Service Award.

—Claude C. Baker

HONORARY MEMBERSHIP

GULF COAST ASSOCIATION OF GEOLOGICAL SOCIETIES

Robert E. Boyer

Robert E. Boyer was born in Palmerton, Pennsylvania. He received his B.A. from Colgate University, M.A. from Indiana University and Ph.D. from the University of Michigan. In 1957, while finishing his Ph.D. requirements, Bob was recruited to join the outstanding geology faculty at The University of Texas at Austin and this choice has proven a most fruitful one for The University of Texas. Bob rose rapidly to the rank of full professor by 1967 and, by 1971, was named Chairman of the Department of Geological Sciences. The department prospered under Bob's strong and dedicated leadership and his outstanding administrative ability became even more apparent. In 1980 he was named Dean of the College of Natural Sciences, a position he still holds.

During Bob's tenure as Chairman of the Department of Geological Sciences, he also served as Director of the Geology Foundation, working closely with members of the Advisory Council.

In 1982, James Robert Moffett, a former student of Bob's, endowed the Robert E. Boyer Centennial Professorship in Geology and Bob was the first recipient of this professorship named in his honor. Bob is currently engaged in a major three-year project, funded by Freeport-McMoran, to study the basic geology of Irian Jaya, Indonesia, an area exceedingly rich in both mineral deposits and complex geology.

Bob Boyer has served his profession in many capacities; space permits mention of only a few key positions. He served as president of the American Geological Institute (1982-83), the Austin Geological Society (1975-76), the National Association of Geology Teachers (1974-



75) as well as its Texas Section (1963), the Society of Sigma Xi—Texas Chapter (1965), and the Texas Academy of Science (1969).

Bob has published more than 100 articles, abstracts, books, manuals, and reports. His early interests were in structural geology and tectonics as well as photo and remote sensing interpretations. His later involvement with earth science education led him into projects and publications in that area. In 1988 he received the AGI Award for the Outstanding Contribution to Public Understanding of Geology.

Bob served the Gulf Coast Association of Geological Societies as Vice President in 1975-76 and as President in 1976-77. He was the Gulf Coast Section's Representative on the Advisory

Council of the American Association of Petroleum Geologists from 1987-89. In 1982, Bob received the Distinguished Service Award from GCAGS.

In 1977, Bob agreed to serve as Publications Chairman for GCAGS. His company, Earth Enterprises, Inc., has handled all GCAGS publication sales and reprints for the past 13 years. Earth Enterprises has expanded to the point where it now handles publications sales for many member societies of GCAGS. Bob and his Earth Enterprises group have become an integral part of each GCAGS annual convention, and all of us enjoy stopping by their booth for a friendly visit and an opportunity to view the excellent publications offered. Through his contributions to GCAGS in publications as well as his timely comments on critical issues at each Board of Directors meeting, Bob plays a most unique role in GCAGS. He provides us with a continuity that would otherwise be missing, as he is the only person who has attended all Board of Directors meetings for the last decade plus!

The Gulf Coast Association of Geological Societies has selected Robert E. Boyer to receive Honorary Membership, its highest honor, based on his great contributions to our science and profession as an outstanding teacher, administrator and earth science educator of the general public and, especially, for his long, and devoted service to GCAGS.

—Don R. Boyd

HONORARY MEMBERSHIP

GULF COAST ASSOCIATION OF GEOLOGICAL SOCIETIES

James A. Hartman

Jim Hartman is one of those individuals whose talents as a geologist, organizer, and leader have enriched in a real way not only the GCAGS but also the New Orleans Geological Society and AAPG as well as the other professional and civic organizations to which he has belonged.

He received the B.S. in Geology from Beloit College in 1951; the M.S. in Geology was awarded to him in 1955 and the Ph.D. in 1957 by the University of Wisconsin. Employed at intervals during this period by some of the large mining corporations he acquired geological field experience in the Caribbean area and in South America.

Jim then began his 28-year career as production geologist and geological engineer with Shell Oil Company and its affiliates. At retirement he had risen to the position of Geological Engineering Consultant. Struck by the potential for increase in Shell's production from its developed fields through careful reinterpretation of the old engineering and geological data he organized and supervised Shell's Field Studies Task Force. He also participated personally in a series of such studies which led to substantial increases in proved oil and gas reserves. Since retirement in 1986 he has engaged in similar studies as an independent consultant.

Jim's contributions to the GCAGS and its literature began in 1968 with his paper: *The Norphlet Sandstone in the Pelahatchie Field, Rankin County, Mississippi*. It was followed in 1971 with *G2 Channel Sandstone in the Main Pass Block 35 Field* (abstract) and in 1976 by 'New' Oil from Old



Fields. In 1985 he was the compiler of Volume 7 in the *Readings in Gulf Coast Geology* series. In 1978 he chaired the Housing Committee for the annual convention. He was vice-president of GCAGS, 1986-1987, and president, 1987-1988 and served on its Board of Directors from 1985 to 1988.

His support of his local society has been unflinching. He was second vice-president of the New Orleans Geological Society, 1975-1976, president-elect, 1984-1985, and president 1985-1986. Along with his many other efforts for NOGS were terms as chairman of the Constitutional Revision, Technical Projects, *Offshore Oil and Gas Fields* Volume 1 and 2, AAPG Student Chapter Liaison, and Memorial Scholarship Committees. He has been particularly generous in his contribution of field papers to the NOGS oil and gas fields and salt dome

volumes and in the solicitation of studies for them, as well as the editing, and publishing of these volumes. In recognition of all this he was presented with the Society's Distinguished Service Award in 1977 and an honorary membership in 1988.

At the national level, during the 15-year period from 1973 to 1987, Jim was continuously involved with one or more AAPG committees. His terms as chairman of the Membership Committee, 1977-1979, the Student Chapter Committee, 1979-1982 and the Committee on Conventions, 1985-1987, were particularly noteworthy for their impact in their areas. He was AAPG Secretary, 1981-1983, and received the Distinguished Service Award in 1985.

Jim lives in Metairie, Louisiana where he and Zoe raised a son and daughter; they now have three grandchildren. While their children were growing up he took a very active role in the citizen movements for better schools and in the management of the local YMCA. In the early 1960's he was president of the Jefferson Parish Committee for Better Schools in which capacity he exerted a positive impact on the composition and organization of the local school board. He has also been first and second vice-president of the Committee of Management of the Metairie Family YMCA.

There is a common thread running through all of Jim's professional and civic efforts. He always brings to them boundless energy and optimistic, imaginative and forceful leadership.

—Lee H. Meltzer

HONORARY MEMBERSHIP

GULF COAST ASSOCIATION OF GEOLOGICAL SOCIETIES

Thomas H. Philpott

Thomas H. Philpott has distinguished himself over the years as one of the leading petroleum geologists in the Southeastern United States. After receiving his B.S. in geology from the University of Oklahoma, he began his professional career in 1939 with the Carter Oil Company, a Standard Oil of New Jersey subsidiary, and served with that firm until 1953. During most of this period, he was based in Shreveport and was responsible for supervising exploratory activities in Louisiana, Arkansas, Mississippi and Alabama. During his tenure with Carter, Tom also served as an instructor in geology at Centenary College. Today, many successful and influential geologists and geophysicists in the Gulf Coast petroleum industry attribute their early training to him.

In addition, he worked as a stratigrapher and was closely associated with Roy T. Hazzard and B. W. Blanpied (both with Gulf Oil) and they collaborated to form the Standard Columnar Section of Arkansas, Mississippi and North Louisiana; which is used today. Tom also lead many field trips in Southwest Arkansas and in the Hot Springs area. He was the only Shreveport Geological Society member to serve two terms as President. He also initiated publishing *Important Oil & Gas Fields*, Volumes I and II.

In 1953, Philpott joined Olin Oil and Gas in New Orleans and served as Vice



President and Exploration Manager for almost 10 years. Tom was responsible for significant oil and gas discoveries in North and South Louisiana and Southern Arkansas. Since 1962, he has served as General Manager for Nilo Oil Company and LaSalle Oil Company; as President of Stanrich Oil Company and Centaur Oil Company, and as President and Treasurer of Chandeleur Exploration Company.

From 1962-1975 he served as Exploration Manager of Edwin L. Cox of Dallas for the Eastern Gulf Coast area; namely, Louisiana, Arkansas, Mississippi and Alabama. During this period Cox participated in many discoveries in

South Louisiana. From 1980-1985 he was a founder and senior vice president of the Exploration Company of Louisiana and since that time he has been an active independent.

During his tenure as president of New Orleans Geological Society he was instrumental in initiating the insurance program; this later became part of the AAPG Insurance Program.

Tom was one of the founders that developed the national certification of Petroleum Geologists by the American Association of Petroleum Geologists (AAPG Certified Petroleum Geologist #5). He became an AAPG member in 1941 and served as Vice President in 1963-64. In addition, he was a founder of the Gulf Coast Association of Geological Societies in 1950 and served as President in 1962.

Tom is a member of the following professional organizations: Society of Economic Paleontologists and Mineralogists (President, 1952-53); Sigma Gamma Epsilon (Honorary Geological Fraternity); Shreveport Geological Society (Honorary Lifetime Member); New Orleans Geological Society (Honorary Lifetime Member); Society of Independent Earth Scientists, American Association of Professional Geological Scientists (Certified Professional Geological Scientist #3274).

HONORARY MEMBERSHIP

GULF COAST SECTION SOCIETY OF ECONOMIC PALEONTOLOGISTS AND MINERALOGISTS

Charles Clarence Albers

Charles Clarence Albers was born in Brenham, Texas on June 9, 1925, the son of a professor of Pharmacognosy at the University of Texas. He is known to his close associates and friends as Clarence, or C². His interest in geology and paleontology was sparked at an early age by his curiosity as to the origin of the pretty rock crystals he found in the road material used to surface the road in front of his family home, and weekend fossil hunting trips with his father to the cretaceous rocks in the Austin area. He entered the University of Texas in 1942, but his academic training was interrupted during WW II by his service in the Army. Upon release from active duty in April 1946, he resumed his studies and received his Bachelor of Science degree in geology from the University of Texas in 1948.

Clarence began his professional career in micropaleontology with Stanolind Oil and Gas Co. (AMOCO) in 1948 in Houston, Texas under the tutelage of Mr. J. B. Garrett. With Clarence's inquisitive interest in paleontology he developed a keen interest in the interpretation and application of paleoenvironmental and biostratigraphic data as applied to Gulf Coast petroleum exploration. In 1962 he was transferred to New Orleans where he was one of the senior paleontology professionals in the newly organized New Orleans Amoco paleontology department. He did pioneer work on the down dip Pliocene/Pleistocene of offshore Louisiana. His professional ability and knowledge of paleoecology was acknowledged by his fellow professionals in the industry when, in 1965 he served as chairman of the GCS-SEPM New Orleans Paleoecologic Committee. This committee produced a consensus paleoecologic chart



Foraminiferal Ecologic Zones of the Gulf Coast, which was published in the 1966 *GCAGS Transactions*. This pioneer paper has been generally accepted as a basic paleoenvironmental reference for the industry in the Gulf Coast. In 1987, Clarence authored the paper *Forty Years Behind the Scope: Recollections of a Recalcitrant Bug-Picker or Reflections on the Evolution of Gulf Coast Foraminiferal Biostratigraphy*, published in the Proceedings of the GCS-SEPM Eighth Annual Research Conference in Houston.

In 1969 Clarence transferred to the Amoco Research Center in Tulsa, where his professional career was enhanced with duties as a Research Scientist, responsible for world-wide foraminiferal biostratigraphic studies. In 1972, Clarence transferred once again to Houston, and was promoted to Amoco Division Paleontologist. In

1978, he requested a lateral career move to Senior Paleontological Associate, returning to the microscope and conducting regional biostratigraphic studies. During this period he authored key company reports on the biostratigraphy of the lower Frio and Wilcox of the coastal Texas area. Clarence concluded his career with Amoco with his retirement in 1986, but remains active in his profession and is currently a consultant in Houston.

Throughout his career Clarence Albers has been a dedicated professional striving for excellence. He is a charter member of GCS-SEPM and has always been cognizant of and dedicated to the promotion and achievement of the objectives and goals of the Section. He has given energetic, constructive service to the GCS-SEPM as Secretary (1963-64), Business Representative (several years), Member Nominating Committee, Chairman Paleoecologic Committee, GCS-SEPM Poster chairman on GCAGS Program Committee, and GCS-SEPM Representative on AAPG Field Trip Committee. Since 1987, Clarence has served as a trustee, and past chairman of the Board of Trustees of the GCS-SEPM Foundation, providing counseling and leadership to the Executive Council. He has a genuine interest in other related professional organizations and is a member of the national SEPM, AAPG, Houston Geological Society and NAMS.

Therefore, this Honorary Membership award from the Gulf Coast Section—SEPM is an acknowledgement of C. Clarence Albers' dedication and service.

—Samuel P. Miano

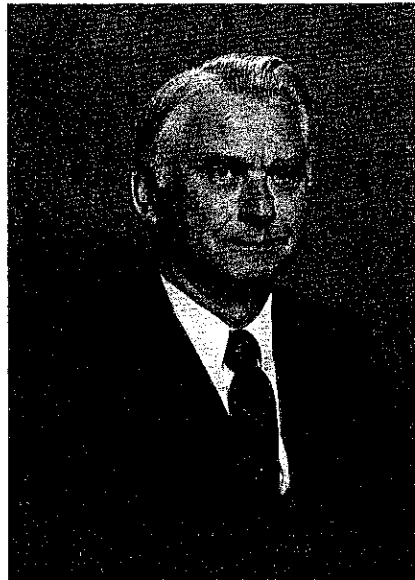
HONORARY MEMBERSHIP

GULF COAST SECTION SOCIETY OF ECONOMIC PALEONTOLOGISTS AND MINERALOGISTS

Benjamin J. Petrusek

It is generally accepted that a person raised on a farm, especially through the Great Depression, has been tempered with attributes of diligence and appreciation for hard work. One of four children of a farming family, **Benjamin J. Petrusek** was born in the small Central Gulf Coast town of Sealy, Texas in August of 1921 and is testimony to the accuracy of the above supposition. He attended the University of Texas where he received the B.A. in Geology in 1942. The world situation being what it was at that time, he entered the USNR Midshipmen School at Notre Dame which awarded him a commission as Ensign in 1943. He served as an officer on an LST in the U.S. Navy Amphibious forces in both the European and Pacific Theatres until his release from active duty in 1946. He continued to maintain an active role in the Navy Reserve through the years, faithfully attending drills and annual cruises. As a result his colleagues in the office affectionally referred to him as the "Admiral!" This did not miss the mark too far. He served as Commander of NR Group 8-1 in New Orleans from 1971-1973, and retired as a Captain in 1975.

Ben began his career in the oil industry with Stanolind Oil and Gas Company in 1946 as a micropaleontologist in their Houston Paleontological Laboratory. In 1962 he supervised the establishment of a paleontological laboratory



for his company (by this time Pan American Petroleum Corporation) in New Orleans. He served as Division Paleontologist until 1973 and subsequently as a senior staff member, helping to train and indoctrinate geologists and petroleum engineers in the intricacies of application of biostratigraphy to exploration. He retired from Amoco in 1984 after 38 years. His retirement years are busy, with traveling and photography dominating his interests.

Ben is a charter member of GCS-SEPM, and has been active in many

capacities through the years. He has served as business representative and on nominating committees twice. He has served on a field trip committee and in 1971 was chairman of the GCS-SEPM Technical Program for the GCAGS-GCS/SEPM Annual Convention. He has served on a Best Paper Judging Committee at a GCAGS Annual Convention. In 1961-62 he served as Secretary, in 1964-65 as Vice-President, and as President of the Section in 1967-68. He is currently on the GCS-SEPM Foundation Development Board. He is a member of SEPM, NAMS, AAPG, Houston Geological Society, and New Orleans Geological Society in which he is an active participating member.

In every organization dependent upon volunteers to make it function there is a wide spectrum of contributions by its members. The type of long term usually low profile competent dependable service exemplified by Ben Petrusek is vital to the health of any organization. For his long and consistent contribution to the Gulf Coast Section—SEPM, it is fitting and proper to recognize him as an Honorary Member.

—*Raphael Guillory*

1989 BEST PAPER AWARDS AND A.I. LEVORSEN MEMORIAL AWARD

GULF COAST ASSOCIATION OF GEOLOGICAL SOCIETIES

First Place and A.I. Levorsen Award awarded to:

Peter J. Hutchinson

For:

Determining Palestructures from Estimated Ultimate Recoveries

PETER J. HUTCHINSON is Manager of Geology for Chambers Development Co., in Pittsburgh, PA. Peter received his B.S. from Syracuse University in 1974 and M.S. from the University of New Mexico in 1980, and is completing his Ph.D. at the University of Pittsburgh. Prior to joining Chambers in 1988, Peter worked as an exploration geologist and seismic interpreter in the offshore Gulf of Mexico for Primary Fuels, Inc. in Houston. Prior to that, he



was an onshore exploration geologist for Exxon Co., USA in Corpus Christi.

Mr. Hutchinson's research interests include hydrocarbon generation, migration, and early accumulation and how these processes can be used in exploring for hydrocarbons. He has also investigated the use of isotopic analyses of methane for the identification of source. As a member of the AAPG Research Committee, Mr. Hutchinson has worked on the Gulf Coast Regional Cross Section and the Type Well projects. He is also active in AIPG and is the Delegate to the AAPG House of Delegates for the Pittsburgh Geological Society and the Pittsburgh Association of Petroleum Geologists.

Second Place awarded to:

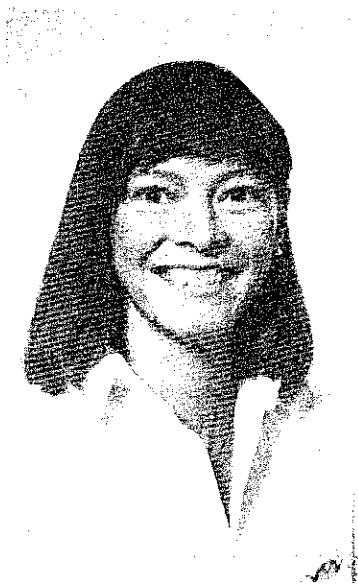
Nanette M. Kuich

For:

Seismic Fracture Identification in Horizontal Drilling: Keys to Optimizing Productivity in a Fractured Reservoir, Giddings Field, Texas

NANETTE KUICH is a Senior Staff Geologist for Mobil Exploration and Producing U.S. Inc. She received a B.A. degree in geology from the State University of New York at Stony Brook in 1975.

Nanette began her career in the energy industry at Sun Oil Co. as a geochemist and exploration geologist. In 1981, she accepted a position with Mobil in the Dallas exploration group where she was given assignments in South America and Alaska. Since her transfer by Mobil to Houston in 1986, Nanette has worked on Mobil's onshore Texas fields.



1989 BEST PAPER AWARDS (Continued)

GULF COAST ASSOCIATION OF GEOLOGICAL SOCIETIES

Third Place awarded to:
William J. Wade, Jeffrey
S. Hanor and Roger
Sassen

For:
*Controls on H₂S Concentration and
Hydrocarbon Destruction in the
Smackover Formation, Southwest
Alabama*

WILLIAM J. WADE received his B.A. in 1975 and M.S. Geology in 1979 from Vanderbilt University. Following two years with the Tennessee Division of Geology, he worked as Exploration Geologist for Champlin Petroleum (now Union Pacific Resources) from 1981-1986. He is presently a Ph.D. candidate in the Department of Geology and Geophysics of Louisiana State University, working under the guidance of

Clyde H. Moore, Jr. Stratigraphy and diagenesis of his dissertation reserach. In addition, since 1989 he has been President of Location Sample Service in Jackson, Mississippi.

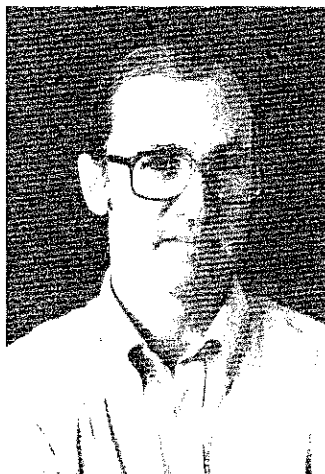
JEFFREY S. HANOR received his B.A. in Geology, Magna Cum Laude, Honors from Carleton College in 1961 and his A.M. and Ph.D. degrees in Geology from Harvard in 1966 and 1967. From 1966 to 1970, Hanor was an NSF Postdoctoral Fellow and a Research Oceanographer at the Scripps Institution of Oceanography. He has been on the faculty at Louisiana State University since 1970 and has served both as the Chairman of the Department of Geology and Geophysics and as Director of the School of the School of Geoscience. His current reserch interests

center around the origin and migration of fluids in sedimentary basins.

ROGER SASSEN received a B.A. in chemistry from Hunter College (1968). After service as an army officer 1969-1972, he obtained M.S. (1973) and Ph.D. (1975) degrees in geological sciences from Lehigh University. He began working at Texaco Research in 1975, and then joined the Getty Oil Company in 1978 where he became Supervisor of Geochemistry. Following the Getty merger with Texaco in 1985, he spent four years as Research Professor and Director of the Basin Research Institute at Louisiana State University. At present, he is Manager of Geochemistry at BP Exploration in Houston, Texas.



William Wade



Jeffrey Hanor



Roger Sassen

1989 BEST POSTER AWARDS

GULF COAST ASSOCIATION OF GEOLOGICAL SOCIETIES

First Place awarded to:

Frank G. Cornish

For:

Variations in Miocene Fluvial Architecture: Bedload System of the Uppermost Goliad Formation around Lake Corpus Christi State Park, South Texas

FRANK G. CORNISH received his BS in geology from Louisiana State University at Baton Rouge in 1973. He worked as a field assistant for the US Geological Survey (Denver) in 1973 helping to assess mineral potential in



Frank Cornish

the West Elks Wilderness area near Gunnison. He earned his MA in geology from the University of Texas at Austin in 1975. He was a development and exploration geologist with Getty Oil in Midland and Oklahoma City from 1975-1978. Since 1978 he has worked for TXO Production Corp. as a development geologist, exploration geologist, and district geologist. He is currently a senior geologist with TXO Production Corp in Corpus Christi working the middle Gulf Coast.

Second Place awarded to:

R. D. McPhearson

For:

Depositional Environmental and Diagenesis of the Benbrook Member of the Goodland Formation (lower Cretaceous), Sabine Parish, Louisiana

R. DEAN MCPHEARSON attended Louisiana Tech University and Northeastern Louisiana University and received both his B. S. degree in geology in 1984 and M. S. degree in 1988 from



R. D. McPhearson

Northeast. He is a Formation Evaluation Engineer with Teleco Oilfield Services where his interests have included measurement-while-drilling (MWD) logging tools. Dean is a member of the AAPG, Sigma Gamma Epsilon, Society of Professional Well Log Analysts and the Lafayette Geological Society.

1989
BEST PAPER AWARDS
GULF COAST SECTION
SOCIETY OF ECONOMIC PALEONTOLOGISTS AND
MINERALOGISTS

**BEST PUBLISHED
 PAPER AWARD**

Awarded to:

***Ron Boyd, Shea Penland
 and John Suter***

For:

*Sequence Stratigraphy of the
 Mississippi Delta*

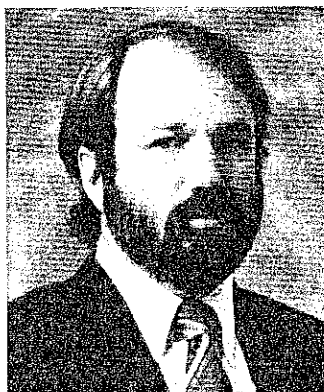


Ron Boyd

RON BOYD received his B.S. degree with honors from the University of Sydney, Australia in 1975. In 1980 he received his Ph.D. degree in marine geology from the University of Sydney as well. Boyd was a Visiting Professor in the Geology Department of Louisiana State University from 1980 to 1981, then transferred to the Louisiana Geological Survey as a marine geologist in 1981. He joined the Geology Department of Dalhousie University in 1982 as Assistant Professor, and was promoted to Associate Professor in 1986. Since 1986 he has also served as an Honorary Research Associate at the Louisiana Geological Survey. In 1988 he became Director of the Centre for Marine Geology at Dalhousie University. He was awarded the 1986 and 1988 SEPM Excellence of Poster

Presentation Award and the 1988 GCS-SEPM Best Published Paper Award. In 1989-90 Boyd received the Alexander von Humboldt Fellowship for study in the Federal Republic of Germany.

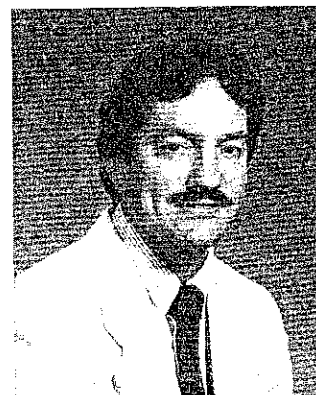
Boyd is a member of the Society of Economic Paleontologists and Mineralogists. He currently teaches graduate and undergraduate courses in sedimentology and marine geology at Dalhousie University. His research interests include sea level and sequence stratigraphy, deltaic, glacial and shallow marine sedimentation. Boyd was sedimentologist/physical properties specialist on Leg 122 of the Ocean Drilling Program. He has published over 50 papers in scientific journals and has been a field trip leader for SEPM, GSA, and ESSO (Canada).



Shea Penland

SHEA PENLAND is the LSU Deputy Director at the Louisiana Geological Survey. A native of the Jacksonville Beaches in northeast Florida, Penland received his B.A. from Jacksonville University in 1976, M.S. from Louisiana State University in 1979, and Ph.D. from Louisiana State University in 1990. Over the last 12 years, Penland's career has focused on coastal geomorphology and geology research in the Beaufort Sea, Gulf of Alaska, North Sea, Great Lakes, British

Columbia, Labrador, New Foundland, California, Florida, and the Gulf of Mexico. Current research activities include coastal erosion, wetland loss, and hard mineral resource studies with the U.S. Geological Survey and hard mineral resource studies with the U.S. Mineral Management Service. He was awarded the 1986 and 1987 SEPM Excellence of Poster Presentation Award and the 1988 GCAGS-SEPM Best Published Paper Award. He is a member of SEPM, IAS, AAG, GSA, and ASBPA. Penland has served as chairman of the SEPM-Coastal Sedimentation Research Group, field trip leader on a variety of professional courses, and vice-president of the Louisiana Shore and Beach Preservation Association. Currently, he is a member on the EPA-GOM: Coastal Erosion Committee, MMS-Regional Technical Working Group, and the LSU Wetland Loss Technical Committee.



John Suter

JOHN R. SUTER obtained Bachelor of Science with honors in Geology and Chemistry from the University of Texas at Austin, and was elected to Phi Beta Kappa in 1977. He received a Master of Arts in Geology from the University of Texas in 1980, and the Ph.D. in Geology from Louisiana State University in 1986.

Suter's professional experience has dealt primarily with coastal and continental shelf processes and stratigraphy within the late Quaternary of the northwestern Gulf of Mexico basin. He worked for the USGS Office of Marine Geology in Corpus Christi, Texas as a research geologist from 1981-1983, interpreting high resolution seismic lines as a part of a regional study of the late Quaternary of the northwest Gulf of Mexico. From 1983 to 1988, Suter worked as a research geologist for the Louisiana Geological Survey, performing a detailed, multi-year

study of the Louisiana continental shelf and the Mississippi River deltaic and chenier plains for the purpose of understanding the impact of sea level rise on coastal evolution. In 1988, Suter joined the Clastic Facies and Sequence Stratigraphy Group at Exxon Production Research in Houston, Texas.

Suter is the author or coauthor of over 30 scientific articles and books, and has led numerous field trips and given short courses examining the coastal and shelf depositional systems of the northwest

Gulf of Mexico for various scientific societies and petroleum companies. He received the AAPG Jules Braunstein Memorial Award in 1986 and the SEPM Excellence of Presentation award in 1986 and 1987. Suter currently serves as the National Representative for the United States and the North American member of the Executive Board of the International Geological Correlation Program Project on Quaternary Coastal Evolution.

1989 EXCELLENCE OF PRESENTATION AWARD

GULF COAST SECTION SOCIETY OF ECONOMIC PALEONTOLOGISTS AND MINERALOGISTS

EXCELLENCE OF PRESENTATION AWARD

Awarded to:

Harry H. Roberts

For:

*¹³C-Depleted Authigenic Carbonate
Buildups from Hydrocarbon Seeps,
Louisiana Continental Slope*

HARRY H. ROBERTS is Director of Coastal Studies Institute, School of Geosciences at Louisiana State University. He is recognized on an international level for sedimentological and sedimentary process research in both terrigenous clastic and carbonate depositional systems. His experience in deltaic and associated marine sediments includes studies of delta plains to submarine fans. He is the author of over 130 scientific papers related to research conducted in the United



Harry H. Roberts

States as well as Africa, Australia, Indonesia, South America, Central America, and many sites in the Caribbean. Most of

these studies have incorporated acquisition and interpretation of high resolution geophysical data in conjunction with sediments, cores, borings, and bottom grabs. Dr. Roberts has received awards for presentations and manuscripts submitted at professional meetings, is an invited lecturer for industry and academic institutions, and serves on national/international scientific steering committees. He is an advisory editor for two international journals and has had over 20 years research experience. During this period, he has been a consultant for most major oil companies that operate in the U.S. Gulf Coast. He has also taught continuing education courses both in the U.S. and in several foreign countries, including Australia, Indonesia, Singapore, and several sites in the Caribbean. He is an active professor in the Department of Geology and Geophysics at LSU where he both teaches and supervises graduate student research.

HONORARY MEMBERS

GULF COAST ASSOCIATION OF GEOLOGICAL SOCIETIES

D. R. Boyd (1982)
J. Braunstein (1982)
M. T. Halbouty (1982)
F. W. Harrison, Jr. (1982)
H. N. Hickey (1982)
L. H. Meltzer (1982)
S. J. Lysinger (1983)
J. O. Lewis (1983)
E. C. Roy, Jr. (1983)
F. L. Smith, Jr. (1983)
P. M. Strunk (1983)
R. J. LeBlanc, Sr. (1984)

W. R. Paine (1984)
M. O. Turner (1984)
R. R. Berg (1985)
W. L. Fisher (1986)
C. L. Sartor (1986)
J. J. Amoruso (1987)
W. L. Stapp (1988)
J. A. Gilreath (1989)
R. E. Boyer (1990)
J. A. Hartman (1990)
T. H. Philpott (1990)

DISTINGUISHED SERVICE AWARDS

GULF COAST ASSOCIATION OF GEOLOGICAL SOCIETIES

1982	<i>R. E. Boyer</i>	<i>P. B. Souders</i>	<i>B. C. Tucker</i>
1983	<i>none awarded</i>		
1984	<i>A. T. Green, Jr.</i>	<i>DeWitt C. Van Sicken</i>	
1985	<i>C. E. Harrison</i>	<i>R. W. Stephens, Jr.</i>	
1986	<i>none awarded</i>		
1987	<i>none awarded</i>		
1988	<i>none awarded</i>		
1989	<i>H. G. Collier, Jr.</i>	<i>R. B. Seigert</i>	
1990	<i>C. J. Corona</i>	<i>R. W. Sabaté</i>	

HONORARY MEMBERS
GULF COAST SECTION
SOCIETY OF ECONOMIC PALEONTOLOGISTS AND
MINERALOGISTS

Ester Applin (1964)
Alva C. Ellisor (1964)
Marcus A. Hanna (1964)
Henry V. Howe (1964)
Hedwig T. Kniker (1964)
Winnie McGamery (1964)
John R. Sandidge (1964)
J. B. Garrett, Jr. (1965)
E. H. Rainwater (1966)
Henryk Bronislaw Stenzel (1971)
Jules Braunstein (1973)
Grover E. Murray (1973)
Harold V. Andersen (1975)
Lyman D. Toulmin (1975)
Doris M. Curtis (1977)
Stuart A. Levinson (1978)

Fred L. Smith, Jr. (1978)
Charles W. Stuckey (1978)
William R. Paine (1980)
Frank E. Lozo, Jr. (1981)
Gene B. Martin (1984)
Bob F. Perkins (1984)
Edward B. Picou, Jr. (1984)
Claude M. Quigley, Jr. (1986)
William P. S. Ventress (1986)
Donald G. Bebout (1987)
David E. Pope (1987)
Emmett Ray Adams (1989)
Jack O. Colle (1989)
John B. Dunlap (1989)
C. Clarence Albers (1990)
Ben J. Petrussek (1990)

DISTINGUISHED HONORARY MEMBER
GULF COAST SECTION
SOCIETY OF ECONOMIC PALEONTOLOGISTS AND
MINERALOGISTS

Charles G. Ventress (1989)

DISTINGUISHED SERVICE AWARDS
GULF COAST SECTION
SOCIETY OF ECONOMIC PALEONTOLOGISTS AND
MINERALOGISTS

Michael J. Nault (1988)
Richard P. Zingula (1988)
Thomas H. Fett (1989)

Dennis Joseph Greig (1989)
None Awarded (1990)

PAST RECIPIENTS BEST PAPER AWARDS AND A. I. LEVORSEN MEMORIAL AWARDS GULF COAST ASSOCIATION OF GEOLOGICAL SOCIETIES

	First Award	Second Award	Third Award	Levorsen Award*
1959	J. E. Walters	R. L. Oakes	H. A. Bernard C. F. Major, Jr. B. S. Parrott	
1960	Not awarded			
1961	R. D. Ocamb	D. I. Andrews J. C. Stipe	R. P. Fietz K. R. Scott W. E. Hayes	
1962	D. R. Tucker R. C. Wilshusen	R. J. Granberry W. R. Walton (tie)	G. C. Glaser (tie)#	
1963	E. H. Rainwater	V. Peppard	S. L. Blanton, Jr.	
1964	E. H. Rainwater	D. R. Boyd B. F. Dyer	J. L. Arps	
1965	C. R. Kolb J. R. van Lopik	G. R. Kellough	Not awarded	
1966	B. J. Sloan, Jr.	W. R. Paine	R. E. Gernant R. V. Kesling	B. J. Sloan, Jr.
1967	H. Yarborough, Jr.	W. A. Price	J. Ewing (tie) J. C. Meyers (tie)	H. Yarborough, Jr.
1968	J. D. Myers	E. H. Rainwater	D. J. Hughes	J. D. Myers
1969	P. O. Röehl	J. K. Rogers	D. F. McNamee (tie) L. F. Brown (tie)	J. K. Rogers
1970	J. J. Amoruso	R. R. Berg	J. F. Harris	J. J. Amoruso
1971	H. Yarborough, Jr.	D. A. Reel (tie) G. M. Griffin B. J. Sloan (tie) J. A. Hartman (tie)	Not awarded	H. Yarborough, Jr.
1972	R. R. Berg	M. T. Halbouty	J. J. Amoruso	R. R. Berg
1973	R. D. Woods J. W. Addington	R. D. Ottman P. L. Keyes M. A. Ziegler	R. R. Berg R. L. Findley	J. M. Coleman L. D. Wright
1974	D. H. Kupfer	J. M. Coleman L. D. Wright J. N. Schyda T. Whelan	C. A. Parker	D. H. Kupfer

	First Award	Second Award	Third Award	Levorsen Award*
1975	W. L. Seal J. A. Gilreath	J. D. Myers	B. P. Baganz J. C. Horne J. C. Fern	J. D. Myers
1976	J. D. Robinson A. R. Troell	J. W. Becher C. H. Moore	N. Neel	J. D. Robinson A. R. Troell
1977	D. K. Davies W. R. Almon	J. O. Lewis	J. O. Snowden W. B. Simmons E. B. Troughber R. W. Stephens	D. K. Davies W. R. Almon
1978	C. T. Siemers	J. W. Lund J. S. King R. E. Berlitz J. A. Gilreath	E. F. McBride	C. T. Siemers
1979	C. D. Winker	R. R. Berg	C. C. Christina K. G. Martin	R. R. Berg
1980	E. A. Mancini D. J. Benson	F. W. Harrison, Jr.	G. N. Gatenby	E. A. Mancini D. J. Benson
1981	E. C. Roy, Jr. M. Eidelbach N. Trumbly	J. L. Coleman, Jr. C. J. Coleman	G. J. Grabowski, Jr.	E. C. Roy, Jr. M. Eidelbach N. Trumbly
1982	T. E. Ewing S. C. Caran	D. J. Benson E. A. Mancini	R. R. Berg M. F. Habeck	T. S. Ewing S. C. Caran
1983	J. W. Cagle M. A. Khan	W. M. Ahr H. B. Hull, Jr.	T. E. Ewing (tie) C. H. Moore (tie)	J. W. Cagle M. A. Khan
1984	G. Kinsland	S. K. Stewart	C. L. Sartor S. R. Howard	G. Kinsland
1985	C. C. Walters M. R. Cassa	E. A. Mancini R. M. Mink B. L. Bearden	A. L. Workman J. S. Hanor	W. E. Galloway
1986	S. P. Dutton	A. H. Saller B. R. Moore	J. M. Coleman D. P. Prior H. H. Roberts	S. P. Dutton
1987	S. P. Dutton R. Finley K. Herrington	R. Evans	C. Black R. Berg	S. P. Dutton R. Finley K. Herrington
1988	M. P. Prescott	J. J. O'Brien I. Lerche	D. F. Williams I. Lerche	J. J. O'Brien I. Lerche
1989	Peter Hutchinson	N. M. Kuich	William Wade Jeffery Hanor Roger Sessan	Peter Hutchinson

*—This award is given by the AAPG to the paper that best exemplifies creative ideas in oil and gas exploration (first award, 1966).

#—Glaser and Walton received First Place in the Paleontology Division for their 1962 paper.

PAST RECIPIENTS BEST PAPER AWARDS

GULF COAST SECTION SOCIETY OF ECONOMIC PALEONTOLOGISTS AND MINERALOGISTS

	Best Published Paper	Excellence of Presentation	
1989	Ron Boyd John Suter Shea Penland	Harry H. Roberts	
1988	Ron Boyd Shea Penland	Edward McFarlan, Jr.	
1987	Wayne Isphording Dewayne Imsand George Flowers	Rowdy Lemoine Earle McBride	
1986	Douglas F. Williams Dwight M. Trainor	Robert R. Berg	
1985	Paul A. Thayer Harry H. Roberts	Gordon W. Fielder	
1984	M. J. Ulrich J. R. Kyle P. E. Price	M. Kontrovitz	
1983	E. C. Kusters A. Bailey	D. B. Prior	
1982	J. Mazzullo	C. D. Winker	
1981†	T. A. Daws A. V. Applegate J. C. Palacas	C. R. Handford	
	First Place	Second Place	Third Place
1980††	A. W. Cleaves	I. L. van Heerden H. H. Roberts	T. A. Hansen

	First Place	Second Place	Third Place
1979	L. C. Price J. L. Clayton L. L. Rumen	C. W. Poag R. C. Tresslar	R. E. Casey L. W. Gust R. A. Reynolds D. H. Williams A. Leavesley T. Duis J. M. Spaw
1978	A. Thomson	C. W. Poag	J. A. Schiebout
1977	C. D. Winker J. D. Howard	W. C. Isphording	R. M. Looney V. R. Baker
1976	C. J. Stuart C. A. Caughney	R. R. Berg R. R. Powell	C. W. Poag P. C. Valentine
1975	J. L. Wilson	K. F. Wantland M. E. York	W. C. Isphording
1974	G. M. Friedman	W. F. Tanner C. R. Berquist	R. J. Moiola D. Weiser A. B. Spencer
1973	W. F. Tanner	R. J. Moiola A. B. Spencer	P. A. Thayer (tie) W. J. Cleary E. O'Donnell (tie) A. P. Wright
1972	W. F. Tanner	A. E. Weidie J. L. Wolleben E. F. McBride	P. A. Thayer D. A. Textoris
1971	R. W. Maxwell, Jr.	C. W. Poag	E. A. Shinn
1970	W. W. Hay S. W. Wise, Jr. R. D. Stieglitz	J. B. Dunlap, Jr.	W. L. Fisher C. V. Proctor, Jr. W. E. Galloway J. S. Nagle

†—and Best Poster Award to E. A. Mancini

††Before 1981, awards were given for first, second and third place.

OFFICERS AND COMMITTEES

Fortieth Annual Meeting 1990

OFFICERS

President

Peter G. Gray
P.O. Box 51838
Lafayette, LA 70505
(318) 232-0399

Vice President

Clyde E. Harrison
One Allen Center #780
Houston, Texas 77002
(713) 658-8115

Secretary

Howard Fielding
P.O. Box 53981
Lafayette, LA 70505
(318) 233-1009

Treasurer

Burt Smart
P.O. Box 51114
Lafayette, LA 70505
(318) 235-0916

GENERAL CHAIRMAN & VICE CHAIRMEN

General Chairman

Brian Lock
University of Southwestern
Louisiana
Geology Department
Box 44530
Lafayette, LA 70504
(318) 231-6823

Vice Chairman-GCAGS

James Z. Harris
211 Dover Drive
Lafayette, LA 70503
(318) 984-9505

Vice Chairman-GCS/SEPM

Tom Shunick
Bane & Shunick
519 Hugh Wallis Road, Suite B-5
Lafayette, LA 70508
(318) 235-0740

1990 CONVENTION COMMITTEES

Advertising

Steve Caffery - Chair
Nathan Acosta

Alumni Functions

Robert Anderson - Chair

Arrangements

David Etienne - Chair
Timothy Rynott

Contributions

Peter Sullivan - Co-Chair
Christy Smith - Co-Chair

Crisis

John S. Schoelen - Chair
Paul E. Cassity

Distinguished Visitors

Marvin A. Munchrath - Chair
Dwight Munchrath

DPA Luncheon

Jack Martin - Co-Chair
Gary Parish - Co-Chair

Transactions - GCAGS

Gary Kinsland - Editor
Jack W. Shirley-Asst. Editor
Mark Rutherford-Asst. Editor
Joe Battle
Guy Ellison
Frank Vincent
Mike Archer
Gene Carter
James Willis
Frank Hearn

James Hearne

Bruce Darling
Richard Birdseye
John Sweezy
Bob Anderson
Tim Duex
Jim Harris
Burton Smart
Bruce Desselle
John Schoelen
Allen Bailey
Jerry Yunker
Walter Dobie
Chris Williams

Transactions - GCS/SEPM

Tony Cagle - Editor
Jack Briegel
Mike Archer
Tom Hudson
Barry Gidman

Employment Assistance

Joe Phillips - Chair

Entertainment

Icebreaker
Hugh Curfman - Chair

Cajun Night in Old

Vermilionville
Mella Viera - Chair
Tim Rynott

Exhibits

Barry Gidman - Chair
Scott Carney - Vice-Chair

Field Trips

Robert Trabbert - Chair

Housing

James Gamble - Chair
Pat Landry

Judging/Awards

Michael Nault - Chair

Posters/Core

Daniel R. Tucker - Chair
Scott Carney
Melinda R. Tucker

Printing

Philip Judice - Chair

Program/Short Courses - GCAGS

Daniel Tearpock - Chair
Brian Lock
James Harris

Program GCS/SEPM

William D Schneider - Chair

Publicity

Al J. Trepagnier - Chair
Mella Viera

Registration

Gary Huffman - Chair
Marianne Judice

Speakers Assistance

Timothy Duex - Chair
Cathie Brewer
Catherine Escott

Sporting Event:

Golf Tournament
David H. Naas - Co-Chair
Linda Rice-Naas - Co-Chair

Run

Rusty Preacher - Chair

Tennis

Pat Hurley - Chair
Jack Lane
Rita Slate
Bill Craig

Spouses Activities

Barbara Clardy - Co-Chair
Adele Smart - Co-Chair
Marianne Judice
Cammie Dale
Julaine Gray
Janet Pritchett
David Bennett
Jean Frazell
Sue Munchrath
Loretta Glod

Students

Mary Claire Pastor - Chair

Tobin Theater

Gary Kinsland - Chair

Transportation

Frank Hearn - Chair

GULF COAST ASSOCIATION OF GEOLOGICAL SOCIETIES BOARD OF DIRECTORS 1990-1991

PRESIDENT	Peter G. Grey
VICE PRESIDENT	Clyde E. Harrison
SECRETARY	Howard Fielding
TREASURER	Burt Smart
PAST PRESIDENT	William R. Payne
FINANCE COMMITTEE CHAIR	Gerald A. Cooley

REPRESENTATIVES FROM MEMBER SOCIETIES

Alabama Geological Society	Lawrence J. Rheams
Austin Geological Society	Jan Sloan
Baton Rouge Geological Society	Bobby L. Jones
Corpus Christi Geological Society	Carrol A. Pyle
East Texas Geological Society	C. F. Clawson, II
Houston Geological Society	Ronald W. Harlan
Lafayette Geological Society	Frank Vincent
Mississippi Geological Society	Jim Files
New Orleans Geological Society	Claude C. Baker
Shreveport Geological Society	Johnnie P. Wanger
South Texas Geological Society	Thomas E. Ewing
Southeastern Geological Society	Tom Scott

GULF COAST ASSOCIATION OF GEOLOGICAL SOCIETIES STANDING COMMITTEES June, 1990

A.A.P.G. Advisory

Robert W. Sabaté

Awards and Nominations

Stewart Chuber, Chair

James A. Hartman

William R. Payne

David E. Pope

Richard H. Sams

Finance

Gerald A. Cooley, Chair

Matthew Daura

Clyde E. Harrison

E. Stewart Hastings

Marvin L. Smith

Financial Aid to Students

Valerie M. Ewing, Chair

W. P. Leutze

Peter G. Gray

Historical

David E. Pope, Chair

Long-Range Planning

Edward C. Roy, Jr., Chair

Gerald A. Cooley

James A. Hartman

William R. Payne

Richard H. Sams

Peter G. Gray (ex officio)

Publications

Robert E. Boyer, Chair

David B. Bieler

Edward C. Roy, Jr.

William C. Ward

E.G. (Jerry) Wermund

GULF COAST SECTION
SOCIETY OF ECONOMIC PALEONTOLOGISTS AND
MINERALOGISTS

EXECUTIVE COMMITTEE
1990-1991

PRESIDENT

Sheila C. Barnette
BP Exploration
Sage Plaza Bldg.
5151 San Felipe
Houston, TX 77056
(713) 552-3820

SECRETARY

Nancy L. Engelhart-Moore
Amoco Production Co.
P.O. Box 3092
Houston, TX 77253
(713) 556-3389

PRESIDENT ELECT

Denise M. Butler
BP Exploration
Sage Plaza Bldg.
5151 San Felipe
Houston, TX 77056
(713) 552-3867

TREASURER

Michael W. Center
Paleo-Data, Inc.
6619 Fleur de Lis Drive
New Orleans, LA 70124
(504) 488-3711

VICE PRESIDENT

Michael J. Nault
Chevron U.S.A., Inc.
1301 McKinney St.
Houston, TX 77010
(713) 754-2282

PAST PRESIDENT

Samuel P. Miano
P.O. Box 2061
Garyville, LA 70051
(504) 535-3333 (Office)
(504) 535-2496 (Home)

OFFICERS OF MEMBER SOCIETIES

GULF COAST ASSOCIATION OF GEOLOGICAL SOCIETIES GULF COAST SECTION SOCIETY OF ECONOMIC PALEONTOLOGISTS AND MINERALOGISTS 1990-1991

ALABAMA GEOLOGICAL SOCIETY,
P.O. Box 6184, University, Alabama 35486

President	Lawrence J. Rheams
Vice President	Rona Donahue
Secretary	Andrew Rindsberg
Treasurer	Lewis Dean

AUSTIN GEOLOGICAL SOCIETY,
P.O. Box 1302, Austin, Texas 78767

President	Jan Sloan
President Elect	Peter Boone
Vice President	Rick Manor
Secretary	Kathy Nelson
Treasurer	Carolyn Condon

BATON ROUGE GEOLOGICAL SOCIETY, INC.,
P.O. Box 19151, University Station, Baton Rouge, Louisiana 70893

President	Bobby L. Jones
Vice President	Michael W. Killeen
Secretary	Bill Walter
Treasurer	John W. Musser

CORPUS CHRISTI GEOLOGICAL SOCIETY,
P.O. Box 1068, Corpus Christi, Texas 78403

President	Carroll A. Pyle
President Elect	Rick Railsback
Secretary	Jon Herber
Treasurer	Wayne Croft

EAST TEXAS GEOLOGICAL SOCIETY,
P.O. Box 216, Tyler, Texas 75710

President	C.F. "Casey" Clawson, II
Vice President	Charles Doubek
Secretary-Treasurer	Al Jasper

HOUSTON GEOLOGICAL SOCIETY,
7171 Harwin, Suite 314, Houston, Texas 77036

President	Ronald W. Harlan
President Elect	Cyrus Strong
Vice President	Patrick T. Gordon
Secretary	Martin Oldani
Treasurer	Denise M. Stone

LAFAYETTE GEOLOGICAL SOCIETY,
P.O. Box 51896, Lafayette, Louisiana 70505

President	Frank Vincent
First Vice President	Tim Osborne
Second Vice President	Ellis Guilbeau
Secretary	Joe Phillips
Treasurer	Bill Dale

MISSISSIPPI GEOLOGICAL SOCIETY,
P.O. Box 422, Jackson, Mississippi 39205

President	Jim Files
First Vice President	Steve Ingram
Second Vice President	Mike Noone
Secretary	Dave Chastain
Treasurer	Brad Truett

NEW ORLEANS GEOLOGICAL SOCIETY,
P.O. Box 52172, New Orleans, Louisiana 70152

President	Claude C. Baker
President Elect	Robert B. Bransom
Vice President	Michael J. Gallagher
Secretary	Eric C. Broadbridge
Treasurer	Cynthia L. Wiersma

SHREVEPORT GEOLOGICAL SOCIETY,
P.O. Box 750, Shreveport, Louisiana 71162

President	Johnnie P. Wanger
First Vice President	B. Ross White
Second Vice President	Larry Frizzell
Secretary	Grant E. Black
Treasurer	John F. George, Jr.

SOUTH TEXAS GEOLOGICAL SOCIETY,
D-100 Petroleum Center, San Antonio, Texas 78209

President	Thomas E. Ewing
President Elect	Martha M. Guethle
Vice President	E. Gerald Rolf
Secretary	Douglas A. Draves
Treasurer	William J. Layton

SOUTHEASTERN GEOLOGICAL SOCIETY,
P.O. Box 1634, Tallahassee, Florida 32302

President	Tom Scott
Vice President	Warren Allmon
Secretary/Treasurer	Rich Deurling

PAST OFFICERS AND CONVENTION CHAIRMEN

GULF COAST ASSOCIATION OF GEOLOGICAL SOCIETIES

	HOST CITY	PRESIDENT	VICE-PRESIDENT	SECRETARY	TREASURER	CONVENTION CHAIRMAN
1951	New Orleans	L. Bowling	T. H. Philpott		E. M. Baysinger	
1952	Corpus Christi	W. M. Chaddick, Jr.	W. A. Gorman	J. S. Spencer	T. D. Barber	W. J. Nugent
1953	Shreveport	R. T. Wade	D. D. Utterback	W. A. Peterson	K. Carter	
1954	Houston	W. R. Canada	W. H. Knight	F. H. Webster	E. W. Kimball	R. D. Sprague
1955	Biloxi	A. E. Blanton	L. D. Traupe	C. W. Holcomb	C. C. Barber	G. J. Joyce
1956	San Antonio	R. L. Layden	M. W. Beckman	R. A. Davis	A. F. Scott	T. H. Philpott
1957	New Orleans	H. N. Hickey	P. Montgomery	E. T. Musselman	K. C. Anderson	R. C. Wilshusen
1958	Corpus Christi	E. A. Lohse	R. W. Grayson	J. F. Moss	W. H. Wallace, Jr.	O. G. Bell
1959	Houston	G. C. Hardin, Jr.	L. Harvey	W. W. Woolfolk	J. A. Wheeler	A. E. Blanton
1960	Biloxi	M. F. Kirby	D. N. Osburn	A. W. Wood	E. G. Jeffreys	L. L. Palmer
1961	San Antonio	D. Dassow	E. P. Roth	H. O. Woodbury	E. L. Ames	L. H. Meltzer
1962	New Orleans	T. H. Philpott	J. C. Byrd	W. E. Bancroft	R. E. Rogers	H. J. Tyler
1963	Shreveport	J. C. Byrd	E. Knott	R. W. Luker	D. A. Pedrotti	B. F. Dryer
1964	Corpus Christi	K. Knott	R. E. Fairchild	K. C. Harkins, Jr.	J. L. George, Jr.	E. A. Lohse
1965	Houston	R. E. Fairchild	A. M. Borland	W. A. Robbins, Jr.	J. S. Schoelen	R. R. Copeland
1966	Lafayette	A. M. Borland	J. H. Hensley	M. L. Frazier, Sr.	L. C. Bryant	M. O. Turner
1967	San Antonio	W. L. Stapp	M. D. Horton	L. G. Hughes	E. D. Minihan	L. E. Warren
1968	Jackson	M. D. Horton	R. O. Vernon	J. W. You, Jr.	C. W. Hendry, Jr.	H. S. Puri
1969	Miami	R. O. Vernon	H. J. Tyler	C. E. Brown	B. C. Tucker	J. O. Goffe
1970	Shreveport	H. J. Tyler	L. L. Meltzer	M. L. Dwight	P. G. Gray	R. G. Williamson
1971	New Orleans	L. H. Meltzer	D. R. Boyd	M. H. Oakes	J. E. Melton	J. M. Sides
1972	Corpus Christi	D. R. Boyd	F. M. Schall, Jr.	M. E. Hole, Jr.	P. W. Cawthon, Jr.	C. E. Harrison
1973	Houston	F. M. Schall, Jr.	S. J. Lysinger	T. J. Eby, Jr.	J. L. Bellamy	F. W. Harrison, Jr.
1974	Lafayette	S. J. Lysinger	W. H. Moore	W. E. Taylor	H. L. Ladner	C. H. Williams, Jr.
1975	Jackson	W. H. Moore	C. L. Sartor	J. T. Palmer	C. E. Brown	L. E. Jordan
1976	Shreveport	R. E. Boyer	R. E. Boyer	A. E. Bell	F. L. Osborne, Jr.	E. G. Wermund, Jr.
1977	Austin	R. W. Stephens	P. G. Gray	R. M. Swords	C. J. Corona	J. Braunstein
1978	New Orleans	E. C. Roy, Jr.	F. W. Harrison, Jr.	S. L. Perkins	L. C. Bryant	G. His
1979	San Antonio	F. W. Harrison, Jr.	P. M. Strunk	J. W. Shurley	R. A. Anderson	M. A. Munchrath
1980	Lafayette	P. M. Strunk	J. J. Amoruso	T. J. Wintermute	W. R. Payne	Wilson Humphrey
1981	Corpus Christi	J. J. Amoruso	S. C. Childress	C. G. Beckwith	C. A. Baird	J. O. Lewis
1982	Houston	S. C. Childress	J. P. Palmer	S. A. Horton	P. D. Cate	J. C. Marble
1983	Jackson	J. T. Palmer	E. G. Wermund	C. S. Cook	E. W. Saye	J. M. Forgotson, Jr.
1984	Shreveport	E. G. Wermund	D. E. Pope	R. Everett	D. C. Ratcliff	L. E. Garner
1985	Austin	D. E. Pope	R. H. Sams	B. D. David	F. E. Lindfors-Kearns	H. L. Roland
1986	Baton Rouge	R. H. Sams	J. A. Hartman	M. T. Tobin	T. Cooper	D. F. Tobin
1987	San Antonio	J. A. Hartman	W. R. Payne	R. W. Sabaté	J. E. Bailey	C. C. Baker
1988	New Orleans	W. R. Payne	P. G. Gray	B. E. Gauthier	T. B. Henderson	G. M. Heinzelmann
1989	Corpus Christi	P. G. Gray	C. E. Harrison	H. Fielding	B. Smart	B. E. Lock
1990	Lafayette					

PAST OFFICERS

GULF COAST SECTION SOCIETY OF ECONOMIC PALEONTOLOGISTS AND MINERALOGISTS

	PRESIDENT	VICE-PRESIDENT	SECRETARY	TREASURER
1953-1954	Stuart A. Levinson	Grover E. Murray	William H. Akers	Frank V. Stevensen
1954-1955	Charles W. Stuckey, Jr.	E. H. Rainwater	William H. Akers	Fred L. Smith, Jr.
1955-1956	E. H. Rainwater	Frank S. Westmoreland	Hugh A. Bernard	Eleanor T. Caldwell
1956-1957	Lloyd M. Pyeatt	J. O. Colle	H. Dillingham, Jr.	Eleanor T. Caldwell
1957-1958	J. O. Colle	Fred L. Smith, Jr.	Harold V. Andersen	William G. Parker
1958-1959	Marcus A. Hanna	Claude M. Quigley	Fred E. Smith, Jr.	Bernard L. Hill, Jr.
1959-1960	David E. Pope	A. D. Ellis, Jr.	Gordon C. Munsey	H. A. Chun
1960-1961	Claude M. Quigley	Harold V. Andersen	E. Ann Butler	Edward Marks
1961-1962	Harold V. Andersen	Theodore D. Cook	Benjamin J. Petrusek	Albert D. Warren
1962-1963	Albert D. Warren	Ernest H. Horton	Blair S. Parrott	Henry H. Phillips
1963-1964	Lyman D. Toulmin	E. Ann Butler	Charles C. Albers	John E. Kilgore
1964-1965	Howard L. Tipsword	Benjamin J. Petrusek	D. Jeter Smith	Emmett R. Adams
1965-1966	John B. Dunlap, Jr.	John J. W. Rogers	M. Ray Bane	Charles B. Morris
1966-1967	Hubert C. Skinner	Richard P. Zingula	Gene Ross Kellough	Gene B. Martin
1967-1968	Benjamin J. Petrusek	Dan McGregor	Garrett Briggs	Herbert A. Elliott, Jr.
1968-1969	William A. Atlee	Edgar B. O'Quinn	James W. Fowler	William E. Steinkraus
1969-1970	Fred L. Smith, Jr.	Kenneth L. Loep	Robert K. Sylvester	C. Wylie Poag, Jr.
1970-1971	Jules Braunstein	Douglas E. Jones	Walter H. Trenchard	Robert N. Davids
1971-1972	William W. Hay	William E. Steinkraus	Karl J. Koenig	Gerald R. Stude
1972-1973	C. Wylie Poag, Jr.	Emmett R. Adams	Gerald R. Stude	Joan B. Strough
1973-1974	Edward B. Picou, Jr.	Walter H. Trenchard	Lawrence C. Menconi	J. Loyd Tuttle, Jr.
1974-1975	Emmett R. Adams	Clifton A. Couture	Herbert A. Elliott, Jr.	Doris M. Curtis
1975-1976	James L. Lamb	Lawrence C. Menconi	William S. Grubb	John L. Carney
1976-1977	Clifton A. Couture	Eleanor T. Caldwell	Sherwood W. Wise, Jr.	Joseph E. Boudreaux
1977-1978	Gerald R. Stude	William P.S. Ventress	Gary R. Roberson	George C. Esker, III
1978-1979	Willard P. Leutze	Bob F. Perkins	Walter P. Kessinger	Kenneth A. Hodgkinson
1979-1980	Gene B. Martin	John L. Carney	Mary Ann Raffe	Arthur S. Waterman
1980-1981	Bob F. Perkins	Don G. Bebout	Sheila C. Barnette	Ted Karmen
1981-1982	William P.S. Ventress	Kenneth A. Hodgkinson	Brian J. O'Neill	Kurt Geitzenauer
1982-1983	John L. Carney	Ernest A. Mancini	Susan J. Conger Morris	Kevin C. Kilmartin
1983-1984	Don G. Bebout	Michael J. Nault	Susan J. Conger Morris	Nelson B. Yoder
1984-1985	Ernest A. Mancini	J. M. Crosbie	John G. McPherson	John B. Anderson
1985-1986	Susan J. Conger Morris	Arthur S. Waterman	John G. McPherson	Richard E. Constans
1986-1987	Charles L. McNulty	Denise M. Butler	Kurt R. Geitzenauer	Sylvester Q. Breard, Jr.
1987-1988	Arthur S. Waterman	Brian J. O'Neill	Ramil C. Wright	Charles G. Rosato
1988-1989	Samuel P. Miano	Charles C. Smith	Richard H. Fillon	Bethanne Breisacher
1989-1990	Sheila C. Barnette	Michael J. Nault	Nancy Englehardt-Moore	Michael W. Center